

ARG59352 anti-PKN2 antibody

Package: 100 µl
Store at: -20°C

Summary

Product Description	Rabbit Polyclonal antibody recognizes PKN2
Tested Reactivity	Hu
Predict Reactivity	Ms, Rat
Tested Application	WB
Host	Rabbit
Clonality	Polyclonal
Isotype	IgG
Target Name	PKN2
Species	Human
Immunogen	Synthetic peptide derived from Human PKN2.
Conjugation	Un-conjugated
Alternate Names	Serine/threonine-protein kinase N2; EC 2.7.11.13; PRO2042; PKN gamma; Protein kinase C-like 2; PRK2; PRKCL2; STK7; Pak-2; Protein-kinase C-related kinase 2; PAK2

Application Instructions

Application table	Application	Dilution
	WB	1:500 - 1:2000
Application Note	* The dilutions indicate recommended starting dilutions and the optimal dilutions or concentrations should be determined by the scientist.	

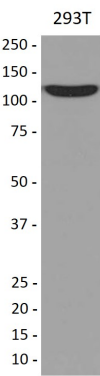
Properties

Form	Liquid
Purification	Affinity purified.
Buffer	PBS (pH 7.4), 0.02% Sodium azide and 50% Glycerol.
Preservative	0.02% Sodium azide
Stabilizer	50% Glycerol
Storage instruction	For continuous use, store undiluted antibody at 2-8°C for up to a week. For long-term storage, aliquot and store at -20°C. Storage in frost free freezers is not recommended. Avoid repeated freeze/thaw cycles. Suggest spin the vial prior to opening. The antibody solution should be gently mixed before use.
Note	For laboratory research only, not for drug, diagnostic or other use.

Bioinformation

Gene Symbol	PKN2
Gene Full Name	protein kinase N2
Function	PKC-related serine/threonine-protein kinase and Rho/Rac effector protein that participates in specific signal transduction responses in the cell. Plays a role in the regulation of cell cycle progression, actin cytoskeleton assembly, cell migration, cell adhesion, tumor cell invasion and transcription activation signaling processes. Phosphorylates CTTN in hyaluronan-induced astrocytes and hence decreases CTTN ability to associate with filamentous actin. Phosphorylates HDAC5, therefore lead to impair HDAC5 import. Direct RhoA target required for the regulation of the maturation of primordial junctions into apical junction formation in bronchial epithelial cells. Required for G2/M phases of the cell cycle progression and abscission during cytokinesis in a ECT2-dependent manner. Stimulates FYN kinase activity that is required for establishment of skin cell-cell adhesion during keratinocytes differentiation. Regulates epithelial bladder cells speed and direction of movement during cell migration and tumor cell invasion. Inhibits Akt pro-survival-induced kinase activity. Mediates Rho protein-induced transcriptional activation via the c-fos serum response factor (SRF). Phosphorylates HCV NS5B leading to stimulation of HCV RNA replication. [UniProt]
Calculated Mw	112 kDa
PTM	Autophosphorylated. Phosphorylated during mitosis. Activated by limited proteolysis with trypsin (By similarity). Proteolytically cleaved by caspase-3 during the induction of apoptotic cell death. [UniProt]
Cellular Localization	Cytoplasm. Nucleus. Membrane. Cell projection, lamellipodium. Cytoplasm, cytoskeleton. Cleavage furrow. Midbody. Cell junction. [UniProt]

Images



ARG59352 anti-PKN2 antibody WB image

Western blot: 293T cell lysate stained with ARG59352 anti-PKN2 antibody.