

ARG59365 anti-Keratocan antibody

Package: 100 µl
Store at: -20°C

Summary

| | |
|---------------------|---|
| Product Description | Rabbit Polyclonal antibody recognizes Keratocan |
| Tested Reactivity | Hu, Ms |
| Tested Application | WB |
| Host | Rabbit |
| Clonality | Polyclonal |
| Isotype | IgG |
| Target Name | Keratocan |
| Species | Human |
| Immunogen | KLH-conjugated synthetic peptide corresponding to aa. 228-257 of Human Keratocan. |
| Conjugation | Un-conjugated |
| Alternate Names | Keratan sulfate proteoglycan keratocan; KTN; SLRR2B; CNA2; Keratocan |

Application Instructions

| | | |
|-------------------|--|----------|
| Application table | Application | Dilution |
| | WB | 1:1000 |
| Application Note | * The dilutions indicate recommended starting dilutions and the optimal dilutions or concentrations should be determined by the scientist. | |
| Positive Control | Mouse eyeball | |

Properties

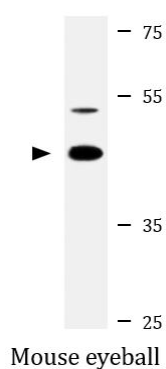
| | |
|---------------------|--|
| Form | Liquid |
| Purification | Purification with Protein A and immunogen peptide. |
| Buffer | PBS and 0.09% (W/V) Sodium azide. |
| Preservative | 0.09% (W/V) Sodium azide. |
| Storage instruction | For continuous use, store undiluted antibody at 2-8°C for up to a week. For long-term storage, aliquot and store at -20°C or below. Storage in frost free freezers is not recommended. Avoid repeated freeze/thaw cycles. Suggest spin the vial prior to opening. The antibody solution should be gently mixed before use. |
| Note | For laboratory research only, not for drug, diagnostic or other use. |

Bioinformation

| | |
|-------------|------|
| Gene Symbol | KERA |
|-------------|------|

| | |
|-----------------------|---|
| Gene Full Name | keratocan |
| Background | The protein encoded by this gene is a keratan sulfate proteoglycan that is involved in corneal transparency. Defects in this gene are a cause of autosomal recessive cornea plana 2 (CNA2).[provided by RefSeq, May 2010] |
| Function | May be important in developing and maintaining corneal transparency and for the structure of the stromal matrix. [UniProt] |
| Calculated Mw | 41 kDa |
| PTM | Binds keratan sulfate chains. [UniProt] |
| Cellular Localization | Secreted, extracellular space, extracellular matrix. [UniProt] |

Images



ARG59365 anti-Keratocan antibody WB image

Western blot: 20 µg of Mouse eyeball lysate stained with ARG59365 anti-Keratocan antibody at 1:1000 dilution.