

## ARG59367 anti-CDR2 antibody

Package: 100 µl  
Store at: -20°C

### Summary

Product Description	Rabbit Polyclonal antibody recognizes CDR2
Tested Reactivity	Hu
Tested Application	IHC-P, WB
Host	Rabbit
Clonality	Polyclonal
Isotype	IgG
Target Name	CDR2
Species	Human
Immunogen	KLH-conjugated synthetic peptide corresponding to aa. 420-448 (C-terminus) of Human CDR2.
Conjugation	Un-conjugated
Alternate Names	Paraneoplastic cerebellar degeneration-associated antigen; Major Yo paraneoplastic antigen; Cerebellar degeneration-related protein 2

### Application Instructions

Application table	Application	Dilution
	IHC-P	1:10 - 1:50
	WB	1:1000
Application Note	* The dilutions indicate recommended starting dilutions and the optimal dilutions or concentrations should be determined by the scientist.	
Positive Control	HepG2	

### Properties

Form	Liquid
Purification	Purification with Protein A and immunogen peptide.
Buffer	PBS and 0.09% (W/V) Sodium azide.
Preservative	0.09% (W/V) Sodium azide.
Storage instruction	For continuous use, store undiluted antibody at 2-8°C for up to a week. For long-term storage, aliquot and store at -20°C or below. Storage in frost free freezers is not recommended. Avoid repeated freeze/thaw cycles. Suggest spin the vial prior to opening. The antibody solution should be gently mixed before use.
Note	For laboratory research only, not for drug, diagnostic or other use.

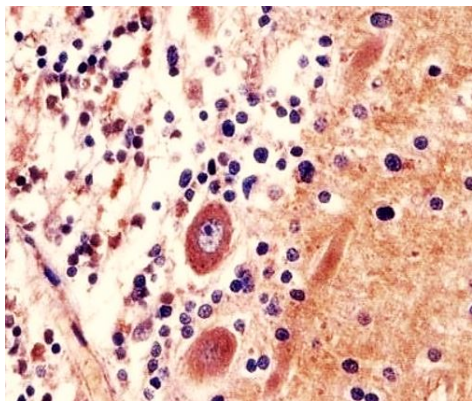
## Bioinformation

---

Gene Symbol	CDR2
Gene Full Name	cerebellar degeneration-related protein 2, 62kDa
Calculated Mw	52 kDa

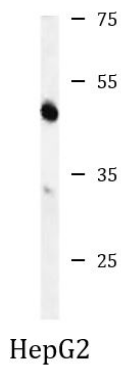
---

## Images



ARG59367 anti-CDR2 antibody IHC-P image

Immunohistochemistry: Formalin-fixed and paraffin-embedded Human cerebellum tissue stained with ARG59367 anti-CDR2 antibody.



ARG59367 anti-CDR2 antibody WB image

Western blot: 35 µg of HepG2 cell lysate stained with ARG59367 anti-CDR2 antibody.