

ARG59373 anti-ZWINT antibody

Package: 100 µl
Store at: -20°C

Summary

Product Description	Rabbit Polyclonal antibody recognizes ZWINT
Tested Reactivity	Hu, Ms
Tested Application	FACS, WB
Host	Rabbit
Clonality	Polyclonal
Isotype	IgG
Target Name	ZWINT
Species	Human
Immunogen	KLH-conjugated synthetic peptide between aa. 59-88 of Human ZWINT.
Conjugation	Un-conjugated
Alternate Names	ZW10 interactor; KNTC2AP; SIP30; Zwint-1; ZW10-interacting protein 1; ZWINT1; HZwint-1

Application Instructions

Application table	Application	Dilution
	FACS	1:10 - 1:50
	WB	1:1000
Application Note	* The dilutions indicate recommended starting dilutions and the optimal dilutions or concentrations should be determined by the scientist.	
Positive Control	MOLT-4	
Observed Size	~ 33 kDa	

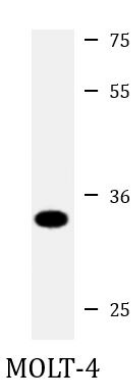
Properties

Form	Liquid
Purification	Saturated Ammonium Sulfate (SAS) precipitation followed by dialysis against PBS.
Buffer	PBS and 0.09% (W/V) Sodium azide.
Preservative	0.09% (W/V) Sodium azide
Storage instruction	For continuous use, store undiluted antibody at 2-8°C for up to a week. For long-term storage, aliquot and store at -20°C or below. Storage in frost free freezers is not recommended. Avoid repeated freeze/thaw cycles. Suggest spin the vial prior to opening. The antibody solution should be gently mixed before use.
Note	For laboratory research only, not for drug, diagnostic or other use.

Bioinformation

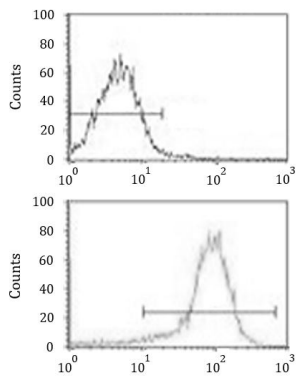
Gene Symbol	ZWINT
Gene Full Name	ZW10 interacting kinetochore protein
Background	This gene encodes a protein that is clearly involved in kinetochore function although an exact role is not known. It interacts with ZW10, another kinetochore protein, possibly regulating the association between ZW10 and kinetochores. The encoded protein localizes to prophase kinetochores before ZW10 does and it remains detectable on the kinetochore until late anaphase. It has a uniform distribution in the cytoplasm of interphase cells. Alternatively spliced transcript variants encoding different isoforms have been found for this gene. [provided by RefSeq, Jul 2008]
Function	Part of the MIS12 complex, which is required for kinetochore formation and spindle checkpoint activity. Required to target ZW10 to the kinetochore at prometaphase. [UniProt]
Calculated Mw	31 kDa
Cellular Localization	Nucleus. Chromosome, centromere, kinetochore. Note=Localizes to kinetochores from late prophase to anaphase. [UniProt]

Images



ARG59373 anti-ZWINT antibody WB image

Western blot: 20 µg of MOLT-4 cell lysate stained with ARG59373 anti-ZWINT antibody at 1:1000 dilution.



ARG59373 anti-ZWINT antibody FACS image

Flow Cytometry: WiDr cells stained with ARG59373 anti-ZWINT antibody (bottom histogram) or without primary antibody as control (top histogram), followed by incubation with FITC labelled secondary antibody.