

ARG59409 anti-TMED9 antibody

Package: 100 µl
Store at: -20°C

Summary

Product Description	Rabbit Polyclonal antibody recognizes TMED9
Tested Reactivity	Hu, Ms, Rat
Tested Application	WB
Host	Rabbit
Clonality	Polyclonal
Isotype	IgG
Target Name	TMED9
Species	Human
Immunogen	Recombinant fusion protein corresponding to aa. 1-224 of Human TMED9 (NP_059980.2).
Conjugation	Un-conjugated
Alternate Names	Glycoprotein 25L2; HSGP25L2G; p25; p24alpha2; p24 family protein alpha-2; GMP25; Transmembrane emp24 domain-containing protein 9

Application Instructions

Application table	Application	Dilution
	WB	1:500 - 1:2000
Application Note	* The dilutions indicate recommended starting dilutions and the optimal dilutions or concentrations should be determined by the scientist.	
Positive Control	Rat liver, Mouse lung and A-431	
Observed Size	27 kDa	

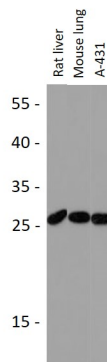
Properties

Form	Liquid
Purification	Affinity purified.
Buffer	PBS (pH 7.3), 0.02% Sodium azide and 50% Glycerol.
Preservative	0.02% Sodium azide
Stabilizer	50% Glycerol
Storage instruction	For continuous use, store undiluted antibody at 2-8°C for up to a week. For long-term storage, aliquot and store at -20°C. Storage in frost free freezers is not recommended. Avoid repeated freeze/thaw cycles. Suggest spin the vial prior to opening. The antibody solution should be gently mixed before use.
Note	For laboratory research only, not for drug, diagnostic or other use.

Bioinformation

Gene Symbol	TMED9
Gene Full Name	transmembrane p24 trafficking protein 9
Function	Appears to be involved in vesicular protein trafficking, mainly in the early secretory pathway. In COPI vesicle-mediated retrograde transport involved in the coatomer recruitment to membranes of the early secretory pathway. Increases coatomer-dependent activity of ARFGAP2. Thought to play a crucial role in the specific retention of p24 complexes in cis-Golgi membranes; specifically contributes to the coupled localization of TMED2 and TMED10 in the cis-Golgi network. May be involved in organization of intracellular membranes, such as of the ER-Golgi intermediate compartment and the Golgi apparatus. Involved in ER localization of PTPN2 isoform PTPB. [UniProt]
Calculated Mw	27 kDa
PTM	N-linked glycosylated containing high mannose. [UniProt]
Cellular Localization	Endoplasmic reticulum membrane; Single-pass type I membrane protein. Golgi apparatus, cis-Golgi network membrane; Single-pass type I membrane protein. Endoplasmic reticulum-Golgi intermediate compartment membrane; Single-pass type I membrane protein. Golgi apparatus, trans-Golgi network membrane; Single-pass type I membrane protein. Note=Cycles between compartments of the early secretory pathway. [UniProt]

Images



ARG59409 anti-TMED9 antibody WB image

Western blot: 25 µg of Rat liver, Mouse lung and A-431 cell lysates stained with ARG59409 anti-TMED9 antibody at 1:3000 dilution.