

ARG59433 anti-SMC6L1 antibody

Package: 50 µg
Store at: -20°C

Summary

| | |
|---------------------|--|
| Product Description | Rabbit Polyclonal antibody recognizes SMC6L1 |
| Tested Reactivity | Hu, Ms, Rat |
| Tested Application | FACS, ICC/IF, IHC-P, WB |
| Host | Rabbit |
| Clonality | Polyclonal |
| Isotype | IgG |
| Target Name | SMC6L1 |
| Species | Human |
| Immunogen | Recombinant protein corresponding to D205-E443 of Human SMC6L1. |
| Conjugation | Un-conjugated |
| Alternate Names | SMC6L1; SMC-6; Structural maintenance of chromosomes protein 6; SMC protein 6; hSMC6 |

Application Instructions

| Application table | Application | Dilution |
|-------------------|-------------|-----------------|
| | FACS | 1:150 - 1:500 |
| | ICC/IF | 1:200 - 1:1000 |
| | IHC-P | 1:200 - 1:1000 |
| | WB | 0.1 - 0.5 µg/ml |

Application Note IHC-P: Antigen Retrieval: Heat mediation was performed in Citrate buffer (pH 6.0) for 20 min.
* The dilutions indicate recommended starting dilutions and the optimal dilutions or concentrations should be determined by the scientist.

Properties

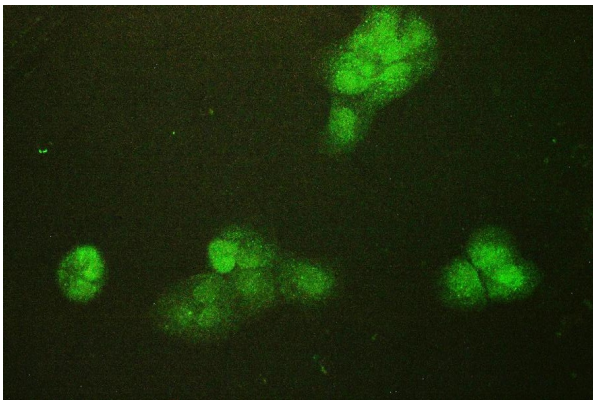
| | |
|---------------------|--|
| Form | Liquid |
| Purification | Affinity purification with immunogen. |
| Buffer | 0.9% NaCl, 0.2% Na ₂ HPO ₄ , 0.05% Sodium azide and 4% Trehalose. |
| Preservative | 0.05% Sodium azide |
| Stabilizer | 4% Trehalose |
| Concentration | 0.5 mg/ml |
| Storage instruction | For continuous use, store undiluted antibody at 2-8°C for up to a week. For long-term storage, aliquot and store at -20°C or below. Storage in frost free freezers is not recommended. Avoid repeated freeze/thaw cycles. Suggest spin the vial prior to opening. The antibody solution should be gently mixed before use. |

Note For laboratory research only, not for drug, diagnostic or other use.

Bioinformation

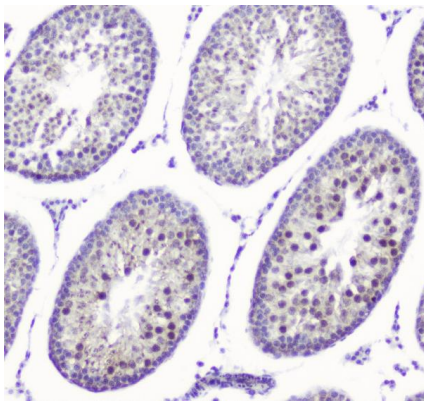
| | |
|-----------------------|--|
| Gene Symbol | SMC6 |
| Gene Full Name | structural maintenance of chromosomes 6 |
| Function | Core component of the SMC5-SMC6 complex, a complex involved in DNA double-strand breaks by homologous recombination. The complex may promote sister chromatid homologous recombination by recruiting the SMC1-SMC3 cohesin complex to double-strand breaks. The complex is required for telomere maintenance via recombination in ALT (alternative lengthening of telomeres) cell lines and mediates sumoylation of shelterin complex (telosome) components which is proposed to lead to shelterin complex disassembly in ALT-associated PML bodies (APBs). Required for recruitment of telomeres to PML nuclear bodies. [UniProt] |
| Calculated Mw | 126 kDa |
| PTM | Phosphorylated. Sumoylated by NSMCE2/MMS21. Ubiquitinated. (Microbial infection) SMC5-SMC6 complex is degraded by the activity of Hepatitis B X protein. [UniProt] |
| Cellular Localization | Nucleus. Nucleus speckle. Chromosome. Nucleus, PML body. Chromosome, telomere. [UniProt] |

Images



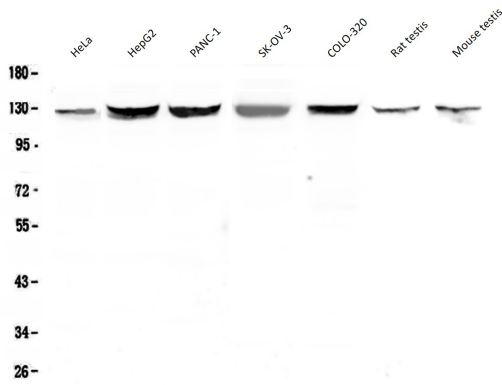
ARG59433 anti-SMC6L1 antibody ICC/IF image

Immunofluorescence: A431 cells were blocked with 10% goat serum and then stained with ARG59433 anti-SMC6L1 antibody (green) at 2 µg/ml dilution, overnight at 4°C.



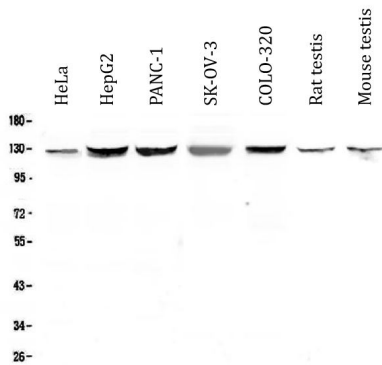
ARG59433 anti-SMC6L1 antibody IHC-P image

Immunohistochemistry: Paraffin-embedded Rat testis tissue. Antigen Retrieval: Heat mediation was performed in Citrate buffer (pH 6.0) for 20 min. The tissue section was blocked with 10% goat serum. The tissue section was then stained with ARG59433 anti-SMC6L1 antibody at 1 µg/ml dilution, overnight at 4°C.



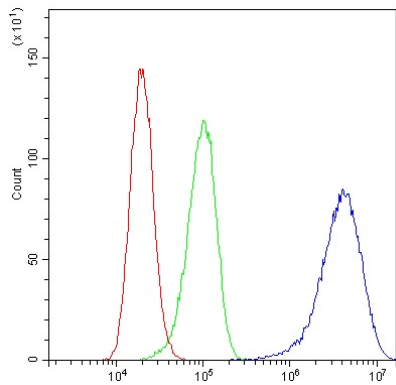
ARG59433 anti-SMC6L1 antibody WB image

Western blot: 50 µg of samples under reducing conditions. HeLa, HepG2, PANC-1, SK-OV-3, COLO-320, Rat testis and Mouse testis lysates stained with ARG59433 anti-SMC6L1 antibody at 0.5 µg/ml, overnight at 4°C.



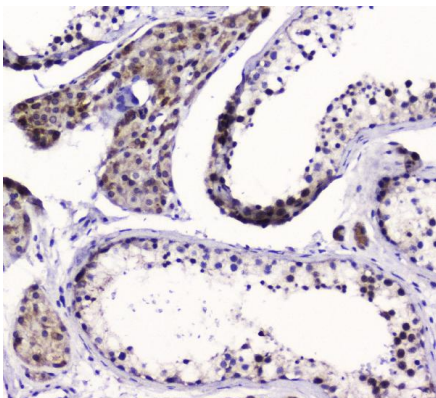
ARG59433 anti-SMC6L1 antibody WB image

Western blot: 50 µg of sample under reducing conditions. HeLa, HepG2, PANC-1, SK-OV-3, COLO-320, Rat testis and Mouse testis lysates stained with ARG59433 anti-SMC6L1 antibody at 0.5 µg/ml dilution, overnight at 4°C.



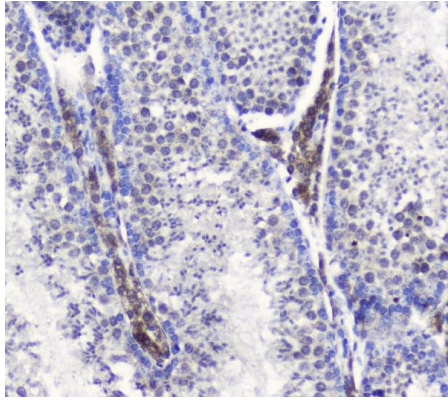
ARG59433 anti-SMC6L1 antibody FACS image

Flow Cytometry: A431 cells were blocked with 10% normal goat serum and then stained with ARG59433 anti-SMC6L1 antibody (blue) at 1 µg/10⁶ cells for 30 min at 20°C, followed by incubation with DyLight[®]488 labelled secondary antibody. Isotype control antibody (green) was rabbit IgG (1 µg/10⁶ cells) used under the same conditions. Unlabelled sample (red) was also used as a control.



ARG59433 anti-SMC6L1 antibody IHC-P image

Immunohistochemistry: Paraffin-embedded Human testis tissue. Antigen Retrieval: Heat mediation was performed in Citrate buffer (pH 6.0) for 20 min. The tissue section was blocked with 10% goat serum. The tissue section was then stained with ARG59433 anti-SMC6L1 antibody at 1 µg/ml dilution, overnight at 4°C.



ARG59433 anti-SMC6L1 antibody IHC-P image

Immunohistochemistry: Paraffin-embedded Mouse testis tissue. Antigen Retrieval: Heat mediation was performed in Citrate buffer (pH 6.0) for 20 min. The tissue section was blocked with 10% goat serum. The tissue section was then stained with ARG59433 anti-SMC6L1 antibody at 1 µg/ml dilution, overnight at 4°C.