

ARG59436 anti-TMEM107 antibody

Package: 50 µg
Store at: -20°C

Summary

Product Description	Rabbit Polyclonal antibody recognizes TMEM107
Tested Reactivity	Hu
Tested Application	FACS, IHC-P, WB
Host	Rabbit
Clonality	Polyclonal
Isotype	IgG
Target Name	TMEM107
Species	Human
Immunogen	Synthetic peptide corresponding to aa. 22-57 of Human TMEM107. (VITLFSRDSNIQACLPLTFTPEEYDKQDIQLVAAL)
Conjugation	Un-conjugated
Alternate Names	PRO1268; Transmembrane protein 107; GRVS638

Application Instructions

Application table	Application	Dilution
	FACS	1:150 - 1:500
	IHC-P	0.5 - 1 µg/ml
	WB	0.1 - 0.5 µg/ml
Application Note	IHC-P: Antigen Retrieval: Heat mediation was performed in Citrate buffer (pH 6.0) for 20 min. * The dilutions indicate recommended starting dilutions and the optimal dilutions or concentrations should be determined by the scientist.	

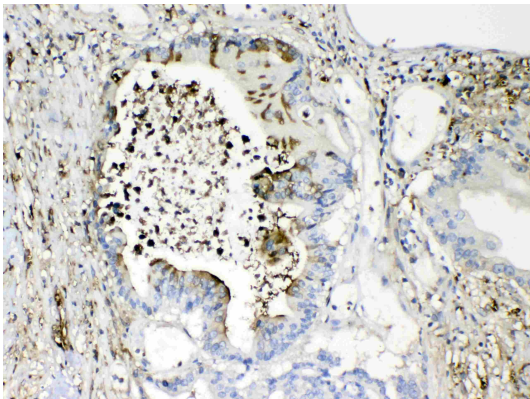
Properties

Form	Liquid
Purification	Affinity purification with immunogen.
Buffer	0.9% NaCl, 0.2% Na ₂ HPO ₄ , 0.05% Sodium azide and 5% BSA.
Preservative	0.05% Sodium azide
Stabilizer	5% BSA
Concentration	0.5 mg/ml
Storage instruction	For continuous use, store undiluted antibody at 2-8°C for up to a week. For long-term storage, aliquot and store at -20°C or below. Storage in frost free freezers is not recommended. Avoid repeated freeze/thaw cycles. Suggest spin the vial prior to opening. The antibody solution should be gently mixed before use.

Bioinformation

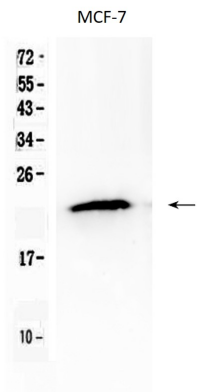
Gene Symbol	TMEM107
Gene Full Name	transmembrane protein 107
Function	Plays a role in cilia formation and embryonic patterning. Requires for normal Sonic hedgehog (Shh) signaling in the neural tube and acts in combination with GLI2 and GLI3 to pattern ventral and intermediate neuronal cell types (By similarity). [UniProt]
Calculated Mw	16 kDa
Cellular Localization	Membrane; Multi-pass membrane protein. Cell projection, cilium. Note=Localizes at the transition zone, a region between the basal body and the ciliary axoneme. [UniProt]

Images



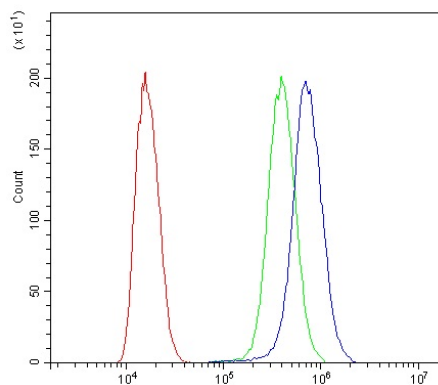
ARG59436 anti-TMEM107 antibody IHC-P image

Immunohistochemistry: Paraffin-embedded Human intestinal cancer tissues. Antigen Retrieval: Heat mediated was performed in Citrate buffer (pH 6.0, epitope retrieval solution) for 20 min. The tissue section was blocked with 10% goat serum. The tissue section was then stained with ARG59436 anti-TMEM107 antibody at 1 µg/ml, overnight at 4°C.



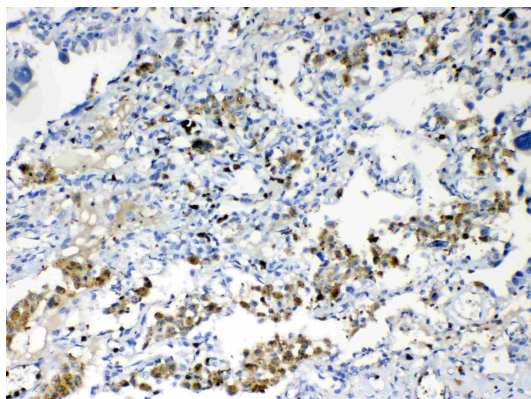
ARG59436 anti-TMEM107 antibody WB image

Western blot: 50 µg of samples under reducing conditions. MCF-7 whole cell lysate stained with ARG59436 anti-TMEM107 antibody at 0.5 µg/ml, overnight at 4°C.



ARG59436 anti-TMEM107 antibody FACS image

Flow Cytometry: SiHa cells were blocked with 10% normal goat serum and then stained with ARG59436 anti-TMEM107 antibody (blue) at $1\text{ }\mu\text{g}/10^6$ cells for 30 min at 20°C , followed by incubation with DyLight[®]488 labelled secondary antibody. Isotype control antibody (green) was rabbit IgG ($1\text{ }\mu\text{g}/10^6$ cells) used under the same conditions. Unlabelled sample (red) was also used as a control.



ARG59436 anti-TMEM107 antibody IHC-P image

Immunohistochemistry: Paraffin-embedded Human lung cancer tissue. Antigen Retrieval: Heat mediated was performed in Citrate buffer (pH 6.0, epitope retrieval solution) for 20 min. The tissue section was blocked with 10% goat serum. The tissue section was then stained with ARG59436 anti-TMEM107 antibody at $1\text{ }\mu\text{g}/\text{ml}$, overnight at 4°C .