

## ARG59442 anti-Epigen antibody

Package: 50 µg  
Store at: -20°C

### Summary

Product Description	Rabbit Polyclonal antibody recognizes Epigen
Tested Reactivity	Rat
Predict Reactivity	Ms
Tested Application	WB
Host	Rabbit
Clonality	Polyclonal
Isotype	IgG
Target Name	Epigen
Species	Mouse
Immunogen	Recombinant protein corresponding to A19-K109 of Mouse Epigen.
Conjugation	Un-conjugated
Alternate Names	Epithelial mitogen; EPG; PRO9904; ALGV3072; Epigen

### Application Instructions

Application table	Application	Dilution
	WB	0.1 - 0.5 µg/ml
Application Note	* The dilutions indicate recommended starting dilutions and the optimal dilutions or concentrations should be determined by the scientist.	

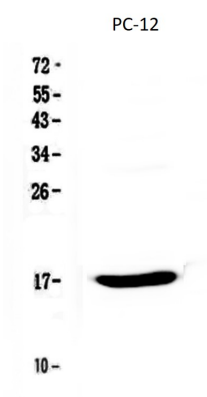
### Properties

Form	Liquid
Purification	Affinity purification with immunogen.
Buffer	0.9% NaCl, 0.2% Na <sub>2</sub> HPO <sub>4</sub> , 0.05% Sodium azide and 5% BSA.
Preservative	0.05% Sodium azide
Stabilizer	5% BSA
Concentration	0.5 mg/ml
Storage instruction	For continuous use, store undiluted antibody at 2-8°C for up to a week. For long-term storage, aliquot and store at -20°C or below. Storage in frost free freezers is not recommended. Avoid repeated freeze/thaw cycles. Suggest spin the vial prior to opening. The antibody solution should be gently mixed before use.
Note	For laboratory research only, not for drug, diagnostic or other use.

Bioinformation

Gene Symbol	EPGN
Gene Full Name	epithelial mitogen
Background	The protein encoded by this gene is a member of the epidermal growth factor family. Members of this family are ligands for the epidermal growth factor receptor and play a role in cell survival, proliferation and migration. This protein has been reported to have high mitogenic activity but low affinity for its receptor. Expression of this transcript and protein have been reported in cancer specimens of the breast, bladder, and prostate. Alternative splicing results in multiple transcript variants. [provided by RefSeq, Aug 2012]
Function	Promotes the growth of epithelial cells. May stimulate the phosphorylation of EGFR and mitogen-activated protein kinases. [UniProt]
Calculated Mw	17 kDa
Cellular Localization	Isoform 1: Membrane; Single-pass type I membrane protein. Isoform 2: Membrane; Single-pass type I membrane protein. Isoform 3: Secreted. Isoform 4: Secreted. Isoform 5: Secreted. Isoform 6: Secreted. [UniProt]

Images



ARG59442 anti-Epigen antibody WB image

Western blot: 50 µg of sample under reducing conditions. PC-12 whole cell lysate stained with ARG59442 anti-Epigen antibody at 0.5 µg/ml, overnight at 4°C.