

## ARG59446 anti-TMEM240 antibody

Package: 50 µg  
Store at: -20°C

### Summary

Product Description	Rabbit Polyclonal antibody recognizes TMEM240
Tested Reactivity	Hu, Ms, Rat
Tested Application	WB
Host	Rabbit
Clonality	Polyclonal
Isotype	IgG
Target Name	TMEM240
Species	Human
Immunogen	Recombinant protein corresponding to M1-L173 of Human TMEM240.
Conjugation	Un-conjugated
Alternate Names	SCA21; Transmembrane protein 240; C1orf70

### Application Instructions

Application table	Application	Dilution
	WB	0.1 - 0.5 µg/ml
Application Note	* The dilutions indicate recommended starting dilutions and the optimal dilutions or concentrations should be determined by the scientist.	

### Properties

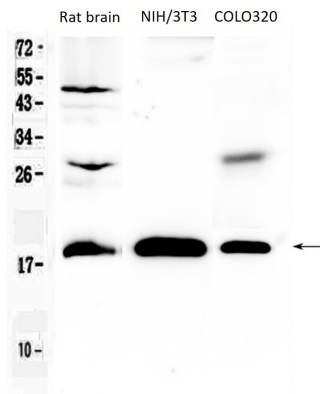
Form	Liquid
Purification	Affinity purification with immunogen.
Buffer	0.9% NaCl, 0.2% Na <sub>2</sub> HPO <sub>4</sub> , 0.05% Sodium azide and 5% BSA.
Preservative	0.05% Sodium azide
Stabilizer	5% BSA
Concentration	0.5 mg/ml
Storage instruction	For continuous use, store undiluted antibody at 2-8°C for up to a week. For long-term storage, aliquot and store at -20°C or below. Storage in frost free freezers is not recommended. Avoid repeated freeze/thaw cycles. Suggest spin the vial prior to opening. The antibody solution should be gently mixed before use.
Note	For laboratory research only, not for drug, diagnostic or other use.

### Bioinformation

Gene Symbol	TMEM240
Gene Full Name	transmembrane protein 240
Background	This gene encodes a transmembrane-domain containing protein found in the brain and cerebellum. Mutations in this gene result in spinocerebellar ataxia 21. [provided by RefSeq, Dec 2014]
Calculated Mw	20 kDa
Cellular Localization	Cell junction, synapse. Cell membrane; Multi-pass membrane protein. [UniProt]

Images

---



ARG59446 anti-TMEM240 antibody WB image

Western blot: 50 µg of samples under reducing conditions. Rat brain, NIH/3T3 and COLO320 whole cell lysates stained with ARG59446 anti-TMEM240 antibody at 0.5 µg/ml, overnight at 4°C.