

ARG59462 anti-GJC2 / Connexin 47 antibody

Package: 50 µg
Store at: -20°C

Summary

Product Description	Rabbit Polyclonal antibody recognizes GJC2 / Connexin 47
Tested Reactivity	Hu, Ms, Rat
Tested Application	WB
Host	Rabbit
Clonality	Polyclonal
Isotype	IgG
Target Name	GJC2 / Connexin 47
Species	Human
Immunogen	Synthetic peptide corresponding to aa. 336-368 of Human GJC2. (VVRAAERARAHDQNLNLANLQALRDGAAAGDRD)
Conjugation	Un-conjugated
Alternate Names	CX46.6; Cx47; Gap junction alpha-12 protein; PMLDAR; SPG44; Gap junction gamma-2 protein; GJA12; Connexin-46.6; LMPH1C; Connexin-47; HLD2; Cx46.6

Application Instructions

Application table	Application	Dilution
	WB	0.1 - 0.5 µg/ml
Application Note	* The dilutions indicate recommended starting dilutions and the optimal dilutions or concentrations should be determined by the scientist.	

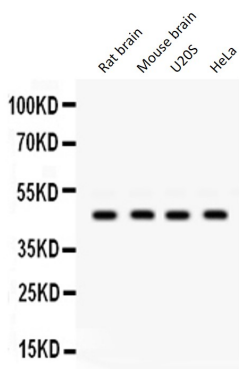
Properties

Form	Liquid
Purification	Affinity purification with immunogen.
Buffer	0.9% NaCl, 0.2% Na ₂ HPO ₄ , 0.05% Sodium azide and 5% BSA.
Preservative	0.05% Sodium azide
Stabilizer	5% BSA
Concentration	0.5 mg/ml
Storage instruction	For continuous use, store undiluted antibody at 2-8°C for up to a week. For long-term storage, aliquot and store at -20°C or below. Storage in frost free freezers is not recommended. Avoid repeated freeze/thaw cycles. Suggest spin the vial prior to opening. The antibody solution should be gently mixed before use.
Note	For laboratory research only, not for drug, diagnostic or other use.

Bioinformation

Gene Symbol	GJC2
Gene Full Name	gap junction protein, gamma 2, 47kDa
Background	This gene encodes a gap junction protein. Gap junction proteins are members of a large family of homologous connexins and comprise 4 transmembrane, 2 extracellular, and 3 cytoplasmic domains. This gene plays a key role in central myelination and is involved in peripheral myelination in humans. Defects in this gene are the cause of autosomal recessive Pelizaeus-Merzbacher-like disease-1. [provided by RefSeq, Jul 2008]
Function	One gap junction consists of a cluster of closely packed pairs of transmembrane channels, the connexons, through which materials of low MW diffuse from one cell to a neighboring cell. May play a role in myelination in central and peripheral nervous systems. [UniProt]
Calculated Mw	47 kDa
Cellular Localization	Cell membrane; Multi-pass membrane protein. Cell junction, gap junction. [UniProt]

Images



ARG59462 anti-GJC2 / Connexin 47 antibody WB image

Western blot: 50 µg of Rat brain, 50 µg of Mouse brain, 40 µg of U2OS and 40 µg of HeLa whole cell lysates stained with ARG59462 anti-GJC2 / Connexin 47 antibody at 0.5 µg/ml dilution.