

**ARG59485**  
**anti-TMEM240 antibody**Package: 50 µg  
Store at: -20°C

### Summary

Product Description	Rabbit Polyclonal antibody recognizes TMEM240
Tested Reactivity	Hu
Tested Application	ICC/IF
Host	Rabbit
Clonality	Polyclonal
Isotype	IgG
Target Name	TMEM240
Species	Human
Immunogen	Recombinant protein corresponding to aa. 42-87 of Human TMEM240.
Conjugation	Un-conjugated
Alternate Names	SCA21; Transmembrane protein 240; C1orf70

### Application Instructions

Application table	Application	Dilution
	ICC/IF	1:100
Application Note	* The dilutions indicate recommended starting dilutions and the optimal dilutions or concentrations should be determined by the scientist.	

### Properties

Form	Liquid
Purification	Purification with Protein G.
Buffer	PBS (pH 7.4), 0.03% Proclin 300 and 50% Glycerol.
Preservative	0.03% Proclin 300
Stabilizer	50% Glycerol
Storage instruction	For continuous use, store undiluted antibody at 2-8°C for up to a week. For long-term storage, aliquot and store at -20°C. Storage in frost free freezers is not recommended. Avoid repeated freeze/thaw cycles. Suggest spin the vial prior to opening. The antibody solution should be gently mixed before use.
Note	For laboratory research only, not for drug, diagnostic or other use.

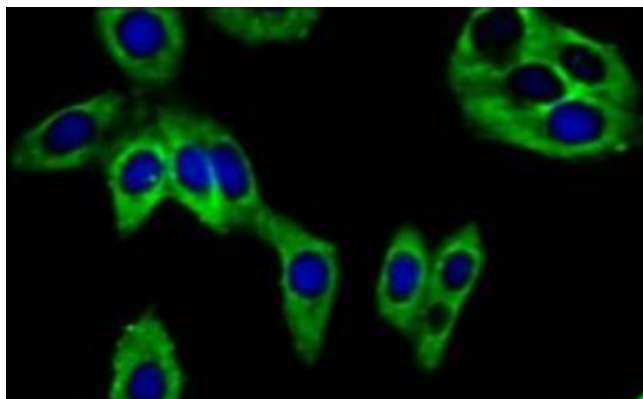
### Bioinformation

Gene Symbol	TMEM240
-------------	---------

Gene Full Name	transmembrane protein 240
Background	This gene encodes a transmembrane-domain containing protein found in the brain and cerebellum. Mutations in this gene result in spinocerebellar ataxia 21. [provided by RefSeq, Dec 2014]
Calculated Mw	20 kDa
Cellular Localization	Cell junction, synapse. Cell membrane; Multi-pass membrane protein. [UniProt]

## Images

---



ARG59485 anti-TMEM240 antibody ICC/IF image

Immunofluorescence: HepG2 cells stained with ARG59485 anti-TMEM240 antibody (green) at 1:100 dilution.

---