

ARG59488 anti-MAF1 antibody

Package: 100 µl
Store at: -20°C

Summary

Product Description	Rabbit Polyclonal antibody recognizes MAF1
Tested Reactivity	Hu, Ms
Predict Reactivity	Bov, Rat
Tested Application	FACS, IHC-P, WB
Host	Rabbit
Clonality	Polyclonal
Isotype	IgG
Target Name	MAF1
Species	Human
Immunogen	KLH-conjugated synthetic peptide corresponding to aa. 90-117 of Human MAF1.
Conjugation	Un-conjugated
Alternate Names	Repressor of RNA polymerase III transcription MAF1 homolog

Application Instructions

Application table	Application	Dilution
	FACS	1:10 - 1:50
	IHC-P	1:50 - 1:100
	WB	1:1000
Application Note	* The dilutions indicate recommended starting dilutions and the optimal dilutions or concentrations should be determined by the scientist.	
Positive Control	Neuro-2a	

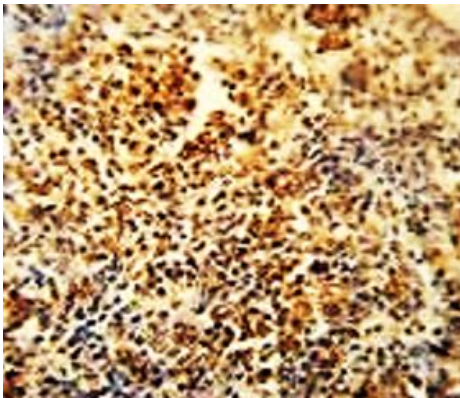
Properties

Form	Liquid
Purification	Purification with Protein A and immunogen peptide.
Buffer	PBS and 0.09% (W/V) Sodium azide.
Preservative	0.09% (W/V) Sodium azide.
Storage instruction	For continuous use, store undiluted antibody at 2-8°C for up to a week. For long-term storage, aliquot and store at -20°C or below. Storage in frost free freezers is not recommended. Avoid repeated freeze/thaw cycles. Suggest spin the vial prior to opening. The antibody solution should be gently mixed before use.
Note	For laboratory research only, not for drug, diagnostic or other use.

Bioinformation

Gene Symbol	MAF1
Gene Full Name	MAF1 homolog (S. cerevisiae)
Background	This gene encodes a protein that is similar to Maf1, a Saccharomyces cerevisiae protein highly conserved in eukaryotic cells. Yeast Maf1 is a negative effector of RNA polymerase III (Pol III). It responds to changes in the cellular environment and represses pol III transcription. Biochemical studies identified the initiation factor TFIIIB as a target for Maf1-dependent repression. [provided by RefSeq, Jul 2008]
Function	Element of the mTORC1 signaling pathway that acts as a mediator of diverse signals and that represses RNA polymerase III transcription. Inhibits the de novo assembly of TFIIIB onto DNA. [UniProt]
Calculated Mw	29 kDa
PTM	Phosphorylated at Ser-60, Ser-68 and Ser-75; the major sites of phosphorylation. Nuclear accumulation correlates with a concomitant dephosphorylation. Phosphorylation may attenuate its RNA polymerase III-repressive function. Sumoylated with SUMO1 and SUMO2, mainly on Lys-35. Desumoylated by SENP1. SUMOylation promotes the ability of MAF1 to repress transcription and suppress colony formation. [UniProt]
Cellular Localization	Nucleus. Cytoplasm. [UniProt]

Images



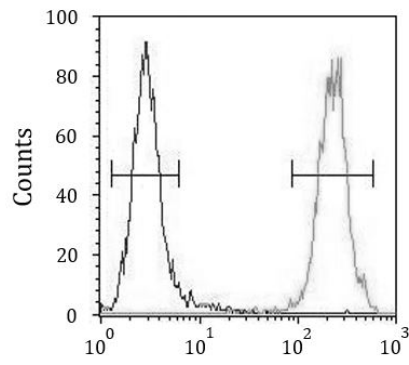
ARG59488 anti-MAF1 antibody IHC-P image

Immunohistochemistry: Formalin-fixed and paraffin-embedded Human lung carcinoma stained with ARG59488 anti-MAF1 antibody.



ARG59488 anti-MAF1 antibody WB image

Western blot: 35 µg of Neuro-2a cell lysate stained with ARG59488 anti-MAF1 antibody.



ARG59488 anti-MAF1 antibody FACS image

Flow Cytometry: Neuro-2a cells stained with ARG59488 anti-MAF1 antibody (right histogram) or without primary antibody as control (left histogram), followed by FITC labelled secondary antibody.