

ARG59494
anti-LRIG3 antibodyPackage: 100 µl
Store at: -20°C**Summary**

| | |
|---------------------|-----------------------------------------------------------------------------|
| Product Description | Rabbit Polyclonal antibody recognizes LRIG3 |
| Tested Reactivity | Hu |
| Tested Application | WB |
| Host | Rabbit |
| Clonality | Polyclonal |
| Isotype | IgG |
| Target Name | LRIG3 |
| Species | Human |
| Immunogen | KLH-conjugated synthetic peptide between aa. 23-54 of Human LRIG3. |
| Conjugation | Un-conjugated |
| Alternate Names | LIG-3; Leucine-rich repeats and immunoglobulin-like domains protein 3; LIG3 |

Application Instructions

| | | |
|-------------------|--------------------------------------------------------------------------------------------------------------------------------------------|----------|
| Application table | Application | Dilution |
| | WB | 1:2000 |
| Application Note | * The dilutions indicate recommended starting dilutions and the optimal dilutions or concentrations should be determined by the scientist. | |
| Positive Control | HepG2 | |
| Observed Size | ~ 120 kDa | |

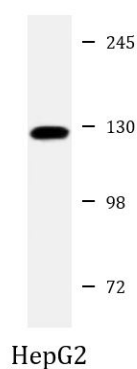
Properties

| | |
|---------------------|----------------------------------------------------------------------------------------------------------------------------------------------------------------------------------------------------------------------------------------------------------------------------------------------------------------------------|
| Form | Liquid |
| Purification | Purification with Protein A and immunogen peptide. |
| Buffer | PBS and 0.09% (W/V) Sodium azide. |
| Preservative | 0.09% (W/V) Sodium azide. |
| Storage instruction | For continuous use, store undiluted antibody at 2-8°C for up to a week. For long-term storage, aliquot and store at -20°C or below. Storage in frost free freezers is not recommended. Avoid repeated freeze/thaw cycles. Suggest spin the vial prior to opening. The antibody solution should be gently mixed before use. |
| Note | For laboratory research only, not for drug, diagnostic or other use. |

Bioinformation

| | |
|-----------------------|-----------------------------------------------------------------------------------------------------------------------------------------------------------------------------------------------------------------------------------------------------------------------------------------|
| Gene Symbol | LRIG3 |
| Gene Full Name | leucine-rich repeats and immunoglobulin-like domains 3 |
| Function | May play a role in craniofacial and inner ear morphogenesis during embryonic development. May act within the otic vesicle epithelium to control formation of the lateral semicircular canal in the inner ear, possibly by restricting the expression of NTN1 (By similarity). [UniProt] |
| Calculated Mw | 123 kDa |
| Cellular Localization | Cell membrane; Single-pass type I membrane protein. Cytoplasmic vesicle membrane; Single-pass type I membrane protein. Note=Detected in cytoplasmic vesicles when coexpressed with ERBB4. [UniProt] |

Images



ARG59494 anti-LRIG3 antibody WB image

Western blot: 20 µg of HepG2 cell lysate stained with ARG59494 anti-LRIG3 antibody at 1:2000 dilution.