

## ARG59495 anti-TBX1 antibody

Package: 100 µl  
Store at: -20°C

### Summary

Product Description	Rabbit Polyclonal antibody recognizes TBX1
Tested Reactivity	Hu
Tested Application	ICC/IF, IHC-P
Host	Rabbit
Clonality	Polyclonal
Isotype	IgG
Target Name	TBX1
Species	Human
Immunogen	KLH-conjugated synthetic peptide corresponding to aa. 327-356 of Human TBX1.
Conjugation	Un-conjugated
Alternate Names	Testis-specific T-box protein; DORV; VCF; T-box transcription factor TBX1; CAFS; T-box protein 1; DGCR; DGS; TGA; CTHM; VCFS; TBX1C; CATCH22

### Application Instructions

Application table	Application	Dilution
	ICC/IF	1:10 - 1:50
	IHC-P	1:50 - 1:100
Application Note	* The dilutions indicate recommended starting dilutions and the optimal dilutions or concentrations should be determined by the scientist.	

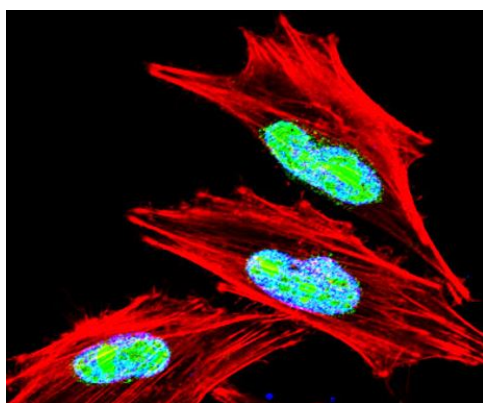
### Properties

Form	Liquid
Purification	Purification with Protein A and immunogen peptide.
Buffer	PBS and 0.09% (W/V) Sodium azide.
Preservative	0.09% (W/V) Sodium azide.
Storage instruction	For continuous use, store undiluted antibody at 2-8°C for up to a week. For long-term storage, aliquot and store at -20°C or below. Storage in frost free freezers is not recommended. Avoid repeated freeze/thaw cycles. Suggest spin the vial prior to opening. The antibody solution should be gently mixed before use.
Note	For laboratory research only, not for drug, diagnostic or other use.

### Bioinformation

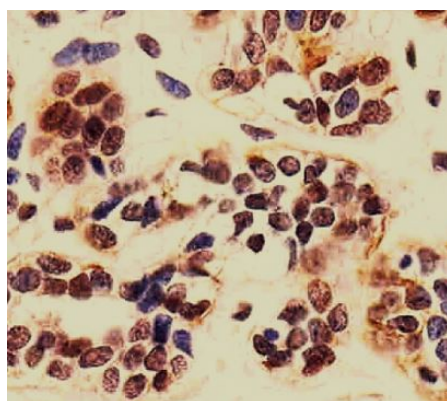
Gene Symbol	TBX1
Gene Full Name	T-box 1
Background	This gene is a member of a phylogenetically conserved family of genes that share a common DNA-binding domain, the T-box. T-box genes encode transcription factors involved in the regulation of developmental processes. This gene product shares 98% amino acid sequence identity with the mouse ortholog. DiGeorge syndrome (DGS)/velocardiofacial syndrome (VCFS), a common congenital disorder characterized by neural-crest-related developmental defects, has been associated with deletions of chromosome 22q11.2, where this gene has been mapped. Studies using mouse models of DiGeorge syndrome suggest a major role for this gene in the molecular etiology of DGS/VCFS. Several alternatively spliced transcript variants encoding different isoforms have been described for this gene. [provided by RefSeq, Jul 2008]
Function	Probable transcriptional regulator involved in developmental processes. Is required for normal development of the pharyngeal arch arteries (By similarity). [UniProt]
Calculated Mw	43 kDa
Cellular Localization	Nucleus. [UniProt]

## Images



ARG59495 anti-TBX1 antibody ICC/IF image

Immunofluorescence: A2058 cells were fixed with 4% PFA (20 min), permeabilized with Triton X-100 (0.1%, 10 min), then stained with ARG59495 anti-TBX1 antibody (green) at 1:25 dilution, 1 hour at 37°C. Cytoplasmic actin was counterstained with Alexa Fluor® 555 (red) conjugated Phalloidin (7 units/ml, 1 hour at 37°C). Nuclei were counterstained with DAPI (blue).



ARG59495 anti-TBX1 antibody IHC-P image

Immunohistochemistry: Paraffin-embedded Human breast tissue stained with ARG59495 anti-TBX1 antibody at 1:25 dilution.