

## ARG59504 anti-CHI3L1 antibody

Package: 100 µl  
Store at: -20°C

### Summary

Product Description	Rabbit Polyclonal antibody recognizes CHI3L1
Tested Reactivity	Hu, Ms, Rat
Tested Application	ICC/IF, IHC-P, WB
Host	Rabbit
Clonality	Polyclonal
Isotype	IgG
Target Name	CHI3L1
Species	Human
Immunogen	Recombinant fusion protein corresponding to aa. 22-240 of Human CHI3L1 (NP_001267.2).
Conjugation	Un-conjugated
Alternate Names	YYL-40; GP-39; ASRT7; YKL40; HC-gp39; HCGP-3P; GP39; Cartilage glycoprotein 39; CGP-39; Chitinase-3-like protein 1; hCGP-39; YKL-40; 39 kDa synovial protein

### Application Instructions

Predict Reactivity Note	Mouse								
Application table	<table><thead><tr><th>Application</th><th>Dilution</th></tr></thead><tbody><tr><td>ICC/IF</td><td>1:50 - 1:200</td></tr><tr><td>IHC-P</td><td>1:50 - 1:200</td></tr><tr><td>WB</td><td>1:500 - 1:2000</td></tr></tbody></table>	Application	Dilution	ICC/IF	1:50 - 1:200	IHC-P	1:50 - 1:200	WB	1:500 - 1:2000
Application	Dilution								
ICC/IF	1:50 - 1:200								
IHC-P	1:50 - 1:200								
WB	1:500 - 1:2000								
Application Note	* The dilutions indicate recommended starting dilutions and the optimal dilutions or concentrations should be determined by the scientist.								
Positive Control	U-87MG								
Observed Size	43 kDa								

### Properties

Form	Liquid
Purification	Affinity purified.
Buffer	PBS (pH 7.3), 0.02% Sodium azide and 50% Glycerol.
Preservative	0.02% Sodium azide
Stabilizer	50% Glycerol
Storage instruction	For continuous use, store undiluted antibody at 2-8°C for up to a week. For long-term storage, aliquot and store at -20°C. Storage in frost free freezers is not recommended. Avoid repeated freeze/thaw

cycles. Suggest spin the vial prior to opening. The antibody solution should be gently mixed before use.

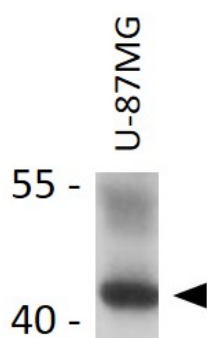
#### Note

For laboratory research only, not for drug, diagnostic or other use.

## Bioinformation

Gene Symbol	CHI3L1
Gene Full Name	chitinase 3-like 1 (cartilage glycoprotein-39)
Background	Chitinases catalyze the hydrolysis of chitin, which is an abundant glycopolymer found in insect exoskeletons and fungal cell walls. The glycoside hydrolase 18 family of chitinases includes eight human family members. This gene encodes a glycoprotein member of the glycosyl hydrolase 18 family. The protein lacks chitinase activity and is secreted by activated macrophages, chondrocytes, neutrophils and synovial cells. The protein is thought to play a role in the process of inflammation and tissue remodeling. [provided by RefSeq, Sep 2009]
Function	Carbohydrate-binding lectin with a preference for chitin. Has no chitinase activity. May play a role in tissue remodeling and in the capacity of cells to respond to and cope with changes in their environment. Plays a role in T-helper cell type 2 (Th2) inflammatory response and IL-13-induced inflammation, regulating allergen sensitization, inflammatory cell apoptosis, dendritic cell accumulation and M2 macrophage differentiation. Facilitates invasion of pathogenic enteric bacteria into colonic mucosa and lymphoid organs. Mediates activation of AKT1 signaling pathway and subsequent IL8 production in colonic epithelial cells. Regulates antibacterial responses in lung by contributing to macrophage bacterial killing, controlling bacterial dissemination and augmenting host tolerance. Also regulates hyperoxia-induced injury, inflammation and epithelial apoptosis in lung. [UniProt]
Calculated Mw	43 kDa
PTM	Glycosylated. [UniProt]
Cellular Localization	Secreted, extracellular space. Cytoplasm. Cytoplasm, perinuclear region. Endoplasmic reticulum. [UniProt]

## Images



ARG59504 anti-CHI3L1 antibody WB image

Western blot: 25 µg of U-87MG cell lysate stained with ARG59504 anti-CHI3L1 antibody at 1:1000 dilution.