

ARG59507 anti-WASL antibody

Package: 100 µl
Store at: -20°C

Summary

Product Description	Rabbit Polyclonal antibody recognizes WASL
Tested Reactivity	Hu, Ms, Rat
Tested Application	ICC/IF, IHC-P, WB
Host	Rabbit
Clonality	Polyclonal
Isotype	IgG
Target Name	WASL
Species	Human
Immunogen	Recombinant fusion protein corresponding to aa. 1-250 of Human WASL (NP_003932.3).
Conjugation	Un-conjugated
Alternate Names	WASPB; N-WASP; NWASP; Neural Wiskott-Aldrich syndrome protein

Application Instructions

Application table	Application	Dilution
	ICC/IF	1:50 - 1:200
	IHC-P	1:50 - 1:200
	WB	1:500 - 1:2000
Application Note	* The dilutions indicate recommended starting dilutions and the optimal dilutions or concentrations should be determined by the scientist.	
Positive Control	Rat brain, Mouse brain and HeLa	
Observed Size	65 kDa	

Properties

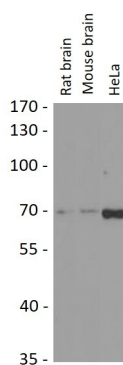
Form	Liquid
Purification	Affinity purified.
Buffer	PBS (pH 7.3), 0.02% Sodium azide and 50% Glycerol.
Preservative	0.02% Sodium azide
Stabilizer	50% Glycerol
Storage instruction	For continuous use, store undiluted antibody at 2-8°C for up to a week. For long-term storage, aliquot and store at -20°C. Storage in frost free freezers is not recommended. Avoid repeated freeze/thaw cycles. Suggest spin the vial prior to opening. The antibody solution should be gently mixed before use.

Note For laboratory research only, not for drug, diagnostic or other use.

Bioinformation

Gene Symbol	WASL
Gene Full Name	Wiskott-Aldrich syndrome-like
Background	This gene encodes a member of the Wiskott-Aldrich syndrome (WAS) protein family. Wiskott-Aldrich syndrome proteins share similar domain structure, and associate with a variety of signaling molecules to alter the actin cytoskeleton. The encoded protein is highly expressed in neural tissues, and interacts with several proteins involved in cytoskeletal organization, including cell division control protein 42 (CDC42) and the actin-related protein-2/3 (ARP2/3) complex. The encoded protein may be involved in the formation of long actin microspikes, and in neurite extension. [provided by RefSeq, Jul 2013]
Function	Regulates actin polymerization by stimulating the actin-nucleating activity of the Arp2/3 complex. Involved in mitosis and cytokinesis, via its role in the regulation of actin polymerization. Binds to HSF1/HSTF1 and forms a complex on heat shock promoter elements (HSE) that negatively regulates HSP90 expression. [UniProt]
Calculated Mw	55 kDa
PTM	Phosphorylation at Ser-242, Tyr-256, Ser-484 and Ser-485 enhances actin polymerization activity. [UniProt]
Cellular Localization	Nucleus. Cytoplasm. Cytoplasm, cytoskeleton. Note=Preferentially localized in the cytoplasm when phosphorylated and in the nucleus when unphosphorylated. Exported from the nucleus by an nuclear export signal (NES)-dependent mechanism to the cytoplasm. [UniProt]

Images



ARG59507 anti-WASL antibody WB image

Western blot: 25 µg of Rat brain, Mouse brain and HeLa cell lysates stained with ARG59507 anti-WASL antibody at 1:3000 dilution.