

ARG59516 anti-CD319 / SLAMF7 antibody

Package: 100 µl
Store at: -20°C

Summary

Product Description	Rabbit Polyclonal antibody recognizes CD319 / SLAMF7
Tested Reactivity	Hu, Ms, Rat
Tested Application	WB
Host	Rabbit
Clonality	Polyclonal
Isotype	IgG
Target Name	CD319 / SLAMF7
Species	Human
Immunogen	Recombinant fusion protein corresponding to aa. 23-226 of Human CD319 / SLAMF7 (NP_067004.3).
Conjugation	Un-conjugated
Alternate Names	CD2-like receptor-activating cytotoxic cells; Protein 19A; CS1; Membrane protein FOAP-12; 19A; CD antigen CD319; SLAM family member 7; CD319; CD2 subset 1; Novel Ly9; CRACC

Application Instructions

Application table	<table> <tr> <th>Application</th><th>Dilution</th></tr> <tr> <td>WB</td><td>1:500 - 1:2000</td></tr> </table>	Application	Dilution	WB	1:500 - 1:2000
Application	Dilution				
WB	1:500 - 1:2000				
Application Note	* The dilutions indicate recommended starting dilutions and the optimal dilutions or concentrations should be determined by the scientist.				
Positive Control	Rat spleen, Mouse spleen and 22Rv1				
Observed Size	37 kDa				

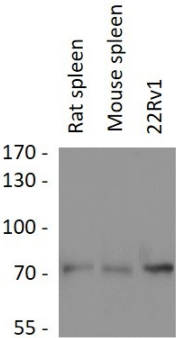
Properties

Form	Liquid
Purification	Affinity purified.
Buffer	PBS (pH 7.3), 0.02% Sodium azide and 50% Glycerol.
Preservative	0.02% Sodium azide
Stabilizer	50% Glycerol
Storage instruction	For continuous use, store undiluted antibody at 2-8°C for up to a week. For long-term storage, aliquot and store at -20°C. Storage in frost free freezers is not recommended. Avoid repeated freeze/thaw cycles. Suggest spin the vial prior to opening. The antibody solution should be gently mixed before use.
Note	For laboratory research only, not for drug, diagnostic or other use.

Bioinformation

Gene Symbol	SLAMF7
Gene Full Name	SLAM family member 7
Function	Isoform 1 mediates NK cell activation through a SH2D1A-independent extracellular signal-regulated ERK-mediated pathway. May play a role in lymphocyte adhesion. Isoform 3 does not mediate any NK cell activation. [UniProt]
Calculated Mw	37 kDa
Cellular Localization	Membrane; Single-pass type I membrane protein. [UniProt]

Images



ARG59516 anti-CD319 / SLAMF7 antibody WB image

Western blot: 25 µg of Rat spleen, Mouse spleen and 22Rv1 cell lysates stained with ARG59516 anti-CD319 / SLAMF7 antibody at 1:3000 dilution.