

## ARG59524 anti-KDM6B / JMJD3 antibody

Package: 100 µl  
Store at: -20°C

### Summary

Product Description	Rabbit Polyclonal antibody recognizes KDM6B / JMJD3
Tested Reactivity	Hu, Ms
Tested Application	ICC/IF, WB
Host	Rabbit
Clonality	Polyclonal
Isotype	IgG
Target Name	KDM6B / JMJD3
Species	Mouse
Immunogen	Recombinant fusion protein corresponding to aa. 90-190 of Mouse KDM6B / JMJD3 (NP_001017426.1).
Conjugation	Un-conjugated
Alternate Names	JmjC domain-containing protein 3; Lysine-specific demethylase 6B; JMJD3; Lysine demethylase 6B; Jumonji domain-containing protein 3; EC 1.14.11.-

### Application Instructions

Application table	Application	Dilution
	ICC/IF	1:50 - 1:200
	WB	1:500 - 1:2000
Application Note	* The dilutions indicate recommended starting dilutions and the optimal dilutions or concentrations should be determined by the scientist.	
Positive Control	SH-SY5Y	
Observed Size	170 - 180 kDa	

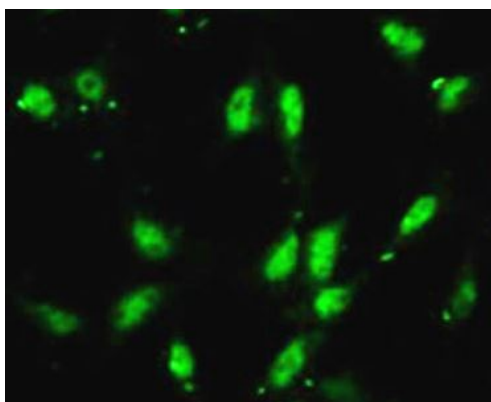
### Properties

Form	Liquid
Purification	Affinity purified.
Buffer	PBS (pH 7.3), 0.02% Sodium azide and 50% Glycerol.
Preservative	0.02% Sodium azide
Stabilizer	50% Glycerol
Storage instruction	For continuous use, store undiluted antibody at 2-8°C for up to a week. For long-term storage, aliquot and store at -20°C. Storage in frost free freezers is not recommended. Avoid repeated freeze/thaw cycles. Suggest spin the vial prior to opening. The antibody solution should be gently mixed before use.
Note	For laboratory research only, not for drug, diagnostic or other use.

## Bioinformation

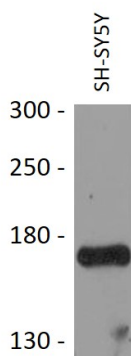
Gene Symbol	KDM6B
Gene Full Name	lysine (K)-specific demethylase 6B
Function	Histone demethylase that specifically demethylates 'Lys-27' of histone H3, thereby playing a central role in histone code. Demethylates trimethylated and dimethylated H3 'Lys-27'. Plays a central role in regulation of posterior development, by regulating HOX gene expression. Involved in inflammatory response by participating in macrophage differentiation in case of inflammation by regulating gene expression and macrophage differentiation. [UniProt]
Calculated Mw	177 kDa
Cellular Localization	Nucleus. [UniProt]

## Images



ARG59524 anti-KDM6B / JMJD3 antibody ICC/IF image

Immunofluorescence: NIH/3T3 cells stained with ARG59524 anti-KDM6B / JMJD3 antibody at 1:100 dilution.



ARG59524 anti-KDM6B / JMJD3 antibody WB image

Western blot: 25 µg of SH-SY5Y cell lysates stained with ARG59524 anti-KDM6B / JMJD3 antibody at 1:3000 dilution.