

ARG59535 anti-SMPD2 / nSMase antibody

Package: 100 µl
Store at: -20°C

Summary

Product Description	Rabbit Polyclonal antibody recognizes SMPD2 / nSMase
Tested Reactivity	Hu
Tested Application	FACS, WB
Host	Rabbit
Clonality	Polyclonal
Isotype	IgG
Target Name	SMPD2 / nSMase
Species	Human
Immunogen	KLH-conjugated synthetic peptide between aa. 9-35 of Human SMPD2 / nSMase.
Conjugation	Un-conjugated
Alternate Names	ISC1; EC 3.1.4.12; NSMASE1; Lyso-platelet-activating factor-phospholipase C; nSMase; Lyso-PAF-PLC; Sphingomyelin phosphodiesterase 2; N-SMase; NSMASE; Neutral sphingomyelinase

Application Instructions

Application table	Application	Dilution
	FACS	1:10 - 1:50
	WB	1:1000
Application Note	* The dilutions indicate recommended starting dilutions and the optimal dilutions or concentrations should be determined by the scientist.	
Positive Control	K562	

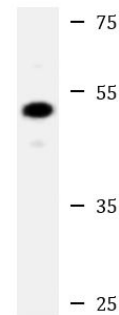
Properties

Form	Liquid
Purification	Saturated Ammonium Sulfate (SAS) precipitation followed by dialysis against PBS.
Buffer	PBS and 0.09% (W/V) Sodium azide.
Preservative	0.09% (W/V) Sodium azide.
Storage instruction	For continuous use, store undiluted antibody at 2-8°C for up to a week. For long-term storage, aliquot and store at -20°C or below. Storage in frost free freezers is not recommended. Avoid repeated freeze/thaw cycles. Suggest spin the vial prior to opening. The antibody solution should be gently mixed before use.
Note	For laboratory research only, not for drug, diagnostic or other use.

Bioinformation

Gene Symbol	SMPD2
Gene Full Name	sphingomyelin phosphodiesterase 2, neutral membrane (neutral sphingomyelinase)
Background	This gene encodes a protein which was initially identified as a sphingomyelinase based on sequence similarity between bacterial sphingomyelinases and a yeast protein. Subsequent studies showed that its biological function is less likely to be as a sphingomyelinase and instead as a lysophospholipase. [provided by RefSeq, Oct 2009]
Function	Converts sphingomyelin to ceramide. Hydrolyze 1-acyl-2-lyso-sn-glycero-3-phosphocholine (lyso-PC) and 1-O-alkyl-2-lyso-sn-glycero-3-phosphocholine (lyso-platelet-activating factor). The physiological substrate seems to be Lyso-PAF. [UniProt]
Calculated Mw	48 kDa
Cellular Localization	Membrane; Multi-pass membrane protein. [UniProt]

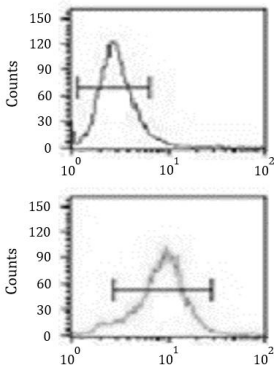
Images



K562

ARG59535 anti-SMPD2 / nSMase antibody WB image

Western blot: 20 µg of K562 cell lysate stained with ARG59535 anti-SMPD2 / nSMase antibody at 1:1000 dilution.



ARG59535 anti-SMPD2 / nSMase antibody FACS image

Flow Cytometry: NCI-H460 cells stained with ARG59535 anti-SMPD2 / nSMase antibody (bottom histogram) or without primary antibody as control (top histogram), followed by FITC-labelled secondary antibody.