

ARG59569
anti-HPX / Hemopexin antibodyPackage: 100 µl
Store at: -20°C

Summary

Product Description	Rabbit Polyclonal antibody recognizes HPX / Hemopexin
Tested Reactivity	Hu, Ms, Rat
Tested Application	WB
Host	Rabbit
Clonality	Polyclonal
Isotype	IgG
Target Name	HPX / Hemopexin
Species	Human
Immunogen	Recombinant fusion protein corresponding to aa. 24-245 of Human HPX (NP_000604.1).
Conjugation	Un-conjugated
Alternate Names	Hemopexin; HX; Beta-1B-glycoprotein

Application Instructions

Application table	Application	Dilution
	WB	1:500 - 1:2000
Application Note	* The dilutions indicate recommended starting dilutions and the optimal dilutions or concentrations should be determined by the scientist.	
Positive Control	Mouse liver and HL-60	
Observed Size	68 kDa	

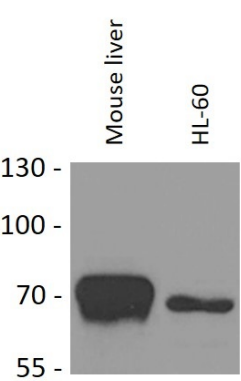
Properties

Form	Liquid
Purification	Affinity purified.
Buffer	PBS (pH 7.3), 0.02% Sodium azide and 50% Glycerol.
Preservative	0.02% Sodium azide
Stabilizer	50% Glycerol
Storage instruction	For continuous use, store undiluted antibody at 2-8°C for up to a week. For long-term storage, aliquot and store at -20°C. Storage in frost free freezers is not recommended. Avoid repeated freeze/thaw cycles. Suggest spin the vial prior to opening. The antibody solution should be gently mixed before use.
Note	For laboratory research only, not for drug, diagnostic or other use.

Bioinformation

Gene Symbol	HPX
Gene Full Name	hemopexin
Background	This gene encodes a plasma glycoprotein that binds heme with high affinity. The encoded protein is an acute phase protein that transports heme from the plasma to the liver and may be involved in protecting cells from oxidative stress. [provided by RefSeq, Apr 2009]
Function	Binds heme and transports it to the liver for breakdown and iron recovery, after which the free hemopexin returns to the circulation. [UniProt]
Calculated Mw	52 kDa
PTM	N- and O-glycosylated. O-glycosylated with core 1 or possibly core 8 glycans. O-glycosylation in the 30-40 region is minor compared to glycosylation at Thr-24 and Thr-29. [UniProt]
Cellular Localization	Secreted. [UniProt]

Images



ARG59569 anti-HPX / Hemopexin antibody WB image

Western blot: 25 µg of Mouse liver and HL-60 cell lysates stained with ARG59569 anti-HPX / Hemopexin antibody at 1:1000 dilution.