

## ARG59582 anti-CRHBP antibody

Package: 100 µl  
Store at: -20°C

### Summary

Product Description	Rabbit Polyclonal antibody recognizes CRHBP
Tested Reactivity	Hu, Ms, Rat
Tested Application	ICC/IF, IHC-P, WB
Host	Rabbit
Clonality	Polyclonal
Isotype	IgG
Target Name	CRHBP
Species	Human
Immunogen	Recombinant fusion protein corresponding to aa. 25-322 of Human CRHBP (NP_001873.2).
Conjugation	Un-conjugated
Alternate Names	CRFBP; CRH-BP; CRF-binding protein; Corticotropin-releasing hormone-binding protein; Corticotropin-releasing factor-binding protein; CRF-BP

### Application Instructions

Application table	Application	Dilution
	ICC/IF	1:50 - 1:200
	IHC-P	1:50 - 1:200
	WB	1:500 - 1:2000
Application Note	* The dilutions indicate recommended starting dilutions and the optimal dilutions or concentrations should be determined by the scientist.	
Positive Control	Rat brain	
Observed Size	37 kDa	

### Properties

Form	Liquid
Purification	Affinity purified.
Buffer	PBS (pH 7.3), 0.02% Sodium azide and 50% Glycerol.
Preservative	0.02% Sodium azide
Stabilizer	50% Glycerol
Storage instruction	For continuous use, store undiluted antibody at 2-8°C for up to a week. For long-term storage, aliquot and store at -20°C. Storage in frost free freezers is not recommended. Avoid repeated freeze/thaw cycles. Suggest spin the vial prior to opening. The antibody solution should be gently mixed before use.

Note

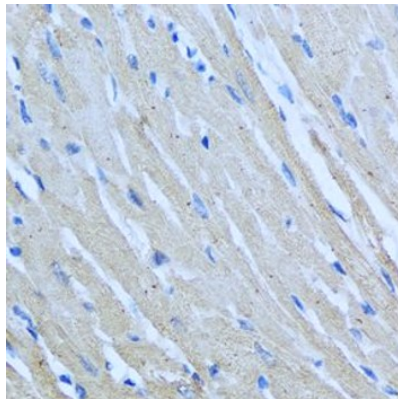
For laboratory research only, not for drug, diagnostic or other use.

## Bioinformation

---

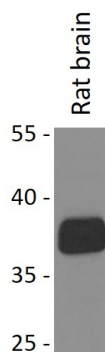
Gene Symbol	CRHBP
Gene Full Name	corticotropin releasing hormone binding protein
Background	Corticotropin-releasing hormone is a potent stimulator of synthesis and secretion of preopiomelanocortin-derived peptides. Although CRH concentrations in the human peripheral circulation are normally low, they increase throughout pregnancy and fall rapidly after parturition. Maternal plasma CRH probably originates from the placenta. Human plasma contains a CRH-binding protein which inactivates CRH and which may prevent inappropriate pituitary-adrenal stimulation in pregnancy. [provided by RefSeq, Jul 2008]
Function	Binds CRF and inactivates it. May prevent inappropriate pituitary-adrenal stimulation in pregnancy. [UniProt]
Calculated Mw	36 kDa
Cellular Localization	Secreted. [UniProt]

## Images



ARG59582 anti-CRHBP antibody IHC-P image

Immunohistochemistry: Paraffin-embedded Rat heart stained with ARG59582 anti-CRHBP antibody at 1:100 dilution.



ARG59582 anti-CRHBP antibody WB image

Western blot: 25 µg of Rat brain lysate stained with ARG59582 anti-CRHBP antibody at 1:1000 dilution.