

ARG59611 anti-ART1 antibody

Package: 100 µl
Store at: -20°C

Summary

Product Description	Rabbit Polyclonal antibody recognizes ART1
Tested Reactivity	Hu, Ms
Tested Application	ICC/IF, IHC-P, WB
Host	Rabbit
Clonality	Polyclonal
Isotype	IgG
Target Name	ART1
Species	Human
Immunogen	Recombinant fusion protein corresponding to aa. 23-295 of Human ART1 (NP_004305.2).
Conjugation	Un-conjugated
Alternate Names	RT6; ART2; ARTC1; CD296; GPI-linked NAD(P)(+)-arginine ADP-ribosyltransferase 1; EC 2.4.2.31; ADP-ribosyltransferase C2 and C3 toxin-like 1; ARTC1; Mono(ADP-ribosyl)transferase 1; CD antigen CD296

Application Instructions

Application table	Application	Dilution
	ICC/IF	1:50 - 1:200
	IHC-P	1:50 - 1:200
	WB	1:500 - 1:2000
Application Note	* The dilutions indicate recommended starting dilutions and the optimal dilutions or concentrations should be determined by the scientist.	
Positive Control	HepG2	
Observed Size	36 kDa	

Properties

Form	Liquid
Purification	Affinity purified.
Buffer	PBS (pH 7.3), 0.02% Sodium azide and 50% Glycerol.
Preservative	0.02% Sodium azide
Stabilizer	50% Glycerol
Storage instruction	For continuous use, store undiluted antibody at 2-8°C for up to a week. For long-term storage, aliquot and store at -20°C. Storage in frost free freezers is not recommended. Avoid repeated freeze/thaw cycles. Suggest spin the vial prior to opening. The antibody solution should be gently mixed before use.

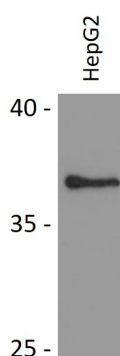
Note

For laboratory research only, not for drug, diagnostic or other use.

Bioinformation

Gene Symbol	ART1
Gene Full Name	ADP-ribosyltransferase 1
Background	ADP-ribosyltransferase catalyzes the ADP-ribosylation of arginine residues in proteins. Mono-ADP-ribosylation is a posttranslational modification of proteins that is interfered with by a variety of bacterial toxins including cholera, pertussis, and heat-labile enterotoxins of E. coli. The amino acid sequence consists of predominantly hydrophobic N- and C-terminal regions, which is characteristic of glycosylphosphatidylinositol (GPI)-anchored proteins. This gene was previously designated ART2. [provided by RefSeq, Jul 2008]
Function	Has ADP-ribosyltransferase activity toward GLP1R. [UniProt]
Calculated Mw	36 kDa
Cellular Localization	Sarcoplasmic reticulum membrane; Lipid-anchor, GPI-anchor. [UniProt]

Images



ARG59611 anti-ART1 antibody WB image

Western blot: 25 µg of HepG2 cell lysates stained with ARG59611 anti-ART1 antibody at 1:1000 dilution.