

ARG59616 anti-DUSP5 antibody

Package: 100 µl
Store at: -20°C

Summary

Product Description	Rabbit Polyclonal antibody recognizes DUSP5
Tested Reactivity	Hu
Tested Application	WB
Host	Rabbit
Clonality	Polyclonal
Isotype	IgG
Target Name	DUSP5
Species	Human
Immunogen	Recombinant fusion protein corresponding to aa. 315-384 of Human DUSP5 (NP_004410.3).
Conjugation	Un-conjugated
Alternate Names	EC 3.1.3.16; HVH3; Dual specificity protein phosphatase 5; Dual specificity protein phosphatase hVH3; EC 3.1.3.48; DUSP

Application Instructions

Application table	<table> <tr> <th>Application</th><th>Dilution</th></tr> <tr> <td>WB</td><td>1:500 - 1:2000</td></tr> </table>	Application	Dilution	WB	1:500 - 1:2000
Application	Dilution				
WB	1:500 - 1:2000				
Application Note	* The dilutions indicate recommended starting dilutions and the optimal dilutions or concentrations should be determined by the scientist.				
Positive Control	Raji				
Observed Size	42 kDa				

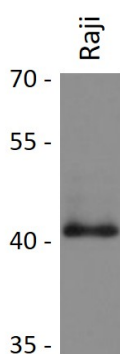
Properties

Form	Liquid
Purification	Affinity purified.
Buffer	PBS (pH 7.3), 0.02% Sodium azide and 50% Glycerol.
Preservative	0.02% Sodium azide
Stabilizer	50% Glycerol
Storage instruction	For continuous use, store undiluted antibody at 2-8°C for up to a week. For long-term storage, aliquot and store at -20°C. Storage in frost free freezers is not recommended. Avoid repeated freeze/thaw cycles. Suggest spin the vial prior to opening. The antibody solution should be gently mixed before use.
Note	For laboratory research only, not for drug, diagnostic or other use.

Bioinformation

Gene Symbol	DUSP5
Gene Full Name	dual specificity phosphatase 5
Background	The protein encoded by this gene is a member of the dual specificity protein phosphatase subfamily. These phosphatases inactivate their target kinases by dephosphorylating both the phosphoserine/threonine and phosphotyrosine residues. They negatively regulate members of the mitogen-activated protein (MAP) kinase superfamily (MAPK/ERK, SAPK/JNK, p38), which are associated with cellular proliferation and differentiation. Different members of the family of dual specificity phosphatases show distinct substrate specificities for various MAP kinases, different tissue distribution and subcellular localization, and different modes of inducibility of their expression by extracellular stimuli. This gene product inactivates ERK1, is expressed in a variety of tissues with the highest levels in pancreas and brain, and is localized in the nucleus. [provided by RefSeq, Jul 2008]
Function	Displays phosphatase activity toward several substrates. The highest relative activity is toward ERK1. [UniProt]
Calculated Mw	42 kDa
Cellular Localization	Nucleus. [UniProt]

Images



ARG59616 anti-DUSP5 antibody WB image

Western blot: 25 µg of Raji cell lysate stained with ARG59616 anti-DUSP5 antibody at 1:1000 dilution.