

ARG59622 anti-TFIIF beta antibody

Package: 100 µl
Store at: -20°C

Summary

Product Description	Rabbit Polyclonal antibody recognizes TFIIF beta
Tested Reactivity	Hu, Ms
Tested Application	ICC/IF, IHC-P, WB
Host	Rabbit
Clonality	Polyclonal
Isotype	IgG
Target Name	TFIIF beta
Species	Human
Immunogen	Recombinant fusion protein corresponding to aa. 1-249 of Human TFIIF beta (NP_004119.1).
Conjugation	Un-conjugated
Alternate Names	BTF4; TF2F2; General transcription factor IIF 30 kDa subunit; General transcription factor IIF subunit 2; EC 3.6.4.12; TFIIF-beta; RAP30; ATP-dependent helicase GTF2F2; TFIIF; Transcription initiation factor RAP30; Transcription initiation factor IIF subunit beta

Application Instructions

Application table	Application	Dilution
	ICC/IF	1:50 - 1:200
	IHC-P	1:50 - 1:200
	WB	1:500 - 1:2000
Application Note	* The dilutions indicate recommended starting dilutions and the optimal dilutions or concentrations should be determined by the scientist.	
Positive Control	Mouse thymus and HepG2	

Properties

Form	Liquid
Purification	Affinity purified.
Buffer	PBS (pH 7.3), 0.02% Sodium azide and 50% Glycerol.
Preservative	0.02% Sodium azide
Stabilizer	50% Glycerol
Storage instruction	For continuous use, store undiluted antibody at 2-8°C for up to a week. For long-term storage, aliquot and store at -20°C. Storage in frost free freezers is not recommended. Avoid repeated freeze/thaw cycles. Suggest spin the vial prior to opening. The antibody solution should be gently mixed before use.

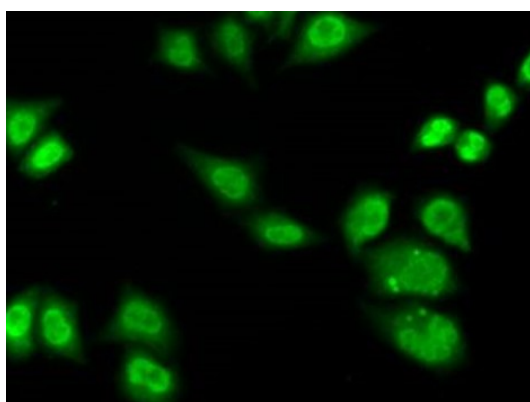
Note

For laboratory research only, not for drug, diagnostic or other use.

Bioinformation

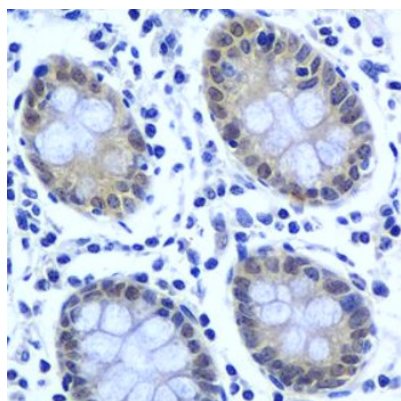
Gene Symbol	GTF2F2
Gene Full Name	general transcription factor IIF, polypeptide 2, 30kDa
Function	TFIIF is a general transcription initiation factor that binds to RNA polymerase II and helps to recruit it to the initiation complex in collaboration with TFIIB. It promotes transcription elongation. This subunit shows ATP-dependent DNA-helicase activity. [UniProt]
Calculated Mw	28 kDa
Cellular Localization	Nucleus. [UniProt]

Images



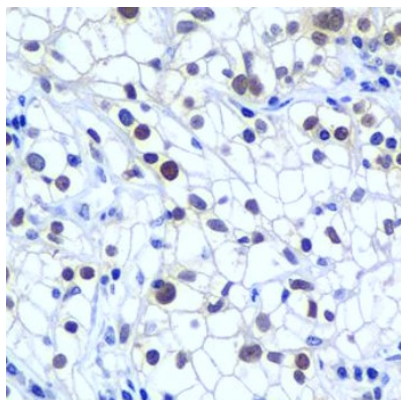
ARG59622 anti-TFIIF beta antibody ICC/IF image

Immunofluorescence: A549 cells stained with ARG59622 anti-TFIIF beta antibody.



ARG59622 anti-TFIIF beta antibody IHC-P image

Immunohistochemistry: Paraffin-embedded Human colon stained with ARG59622 anti-TFIIF beta antibody at 1:200 dilution.



ARG59622 anti-TFIIF beta antibody IHC-P image

Immunohistochemistry: Paraffin-embedded Human kidney cancer stained with ARG59622 anti-TFIIF beta antibody at 1:200 dilution.