

## ARG59626 anti-CTAG1A / NY-ESO 1 antibody

Package: 100 µl  
Store at: -20°C

### Summary

Product Description	Rabbit Polyclonal antibody recognizes CTAG1A / NY-ESO 1
Tested Reactivity	Hu
Tested Application	IHC-P, WB
Host	Rabbit
Clonality	Polyclonal
Isotype	IgG
Target Name	CTAG1A / NY-ESO 1
Species	Human
Immunogen	KLH-conjugated synthetic peptide corresponding to aa. 1-30 of Human CTAG1A.
Conjugation	Un-conjugated
Alternate Names	CTAG; Autoimmunogenic cancer/testis antigen NY-ESO-1; Cancer/testis antigen 1; ESO1; LAGE2B; Cancer/testis antigen 6.1; L antigen family member 2; NY-ESO-1; CT6.1; LAGE-2; CTAG1

### Application Instructions

Application table	Application	Dilution
	IHC-P	1:25
	WB	1:1000
Application Note	IHC-P: Antigen Retrieval: Heat mediation was performed in Citrate buffer (pH 6.0). * The dilutions indicate recommended starting dilutions and the optimal dilutions or concentrations should be determined by the scientist.	
Positive Control	HT-1080	

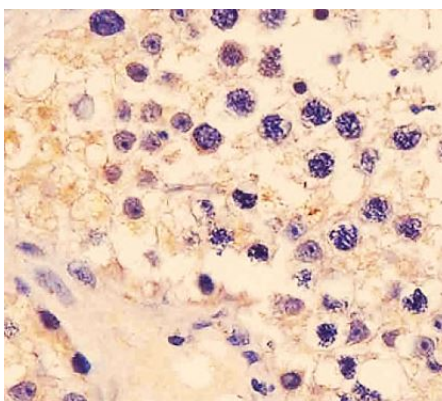
### Properties

Form	Liquid
Purification	Purification with Protein A and immunogen peptide.
Buffer	PBS and 0.09% (W/V) Sodium azide.
Preservative	0.09% (W/V) Sodium azide
Storage instruction	For continuous use, store undiluted antibody at 2-8°C for up to a week. For long-term storage, aliquot and store at -20°C or below. Storage in frost free freezers is not recommended. Avoid repeated freeze/thaw cycles. Suggest spin the vial prior to opening. The antibody solution should be gently mixed before use.
Note	For laboratory research only, not for drug, diagnostic or other use.

## Bioinformation

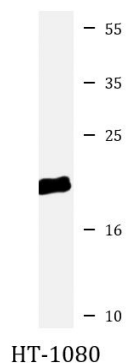
Gene Symbol	CTAG1B
Gene Full Name	cancer/testis antigen 1B
Background	The protein encoded by this gene is an antigen that is overexpressed in many cancers but that is also expressed in normal testis. This gene is found in a duplicated region of the X-chromosome and therefore has a neighboring gene of identical sequence. [provided by RefSeq, Jan 2012]
Calculated Mw	18 kDa
Cellular Localization	Cytoplasm. [UniProt]

## Images



ARG59626 anti-CTAG1A / NY-ESO 1 antibody IHC-P image

Immunohistochemistry: Paraformaldehyde-fixed and paraffin-embedded Human testis blocked with 3% BSA for 0.5 hour at room temperature. Antigen Retrieval: Heat mediation was performed in Citrate buffer (pH 6.0). Samples were stained with ARG59626 anti-CTAG1A / NY-ESO 1 antibody at 1:25 for 1 hours at 37°C.



ARG59626 anti-CTAG1A / NY-ESO 1 antibody WB image

Western blot: 20 µg of HT-1080 cell lysate stained with ARG59626 anti-CTAG1A / NY-ESO 1 antibody at 1:1000 dilution.