

## ARG59629 anti-VILIP3 antibody

Package: 100 µl  
Store at: -20°C

### Summary

Product Description	Rabbit Polyclonal antibody recognizes VILIP3
Tested Reactivity	Hu, Ms
Tested Application	IHC-P, WB
Host	Rabbit
Clonality	Polyclonal
Isotype	IgG
Target Name	VILIP3
Species	Human
Immunogen	KLH-conjugated synthetic peptide between aa. 2-32 of Human VILIP3.
Conjugation	Un-conjugated
Alternate Names	Calcium-binding protein BDR-1; BDR1; Visinin-like protein 3; HLP2; Hippocalcin-like protein 1; VILIP-3

### Application Instructions

Application table	Application	Dilution
	IHC-P	1:50 - 1:100
	WB	1:1000
Application Note	* The dilutions indicate recommended starting dilutions and the optimal dilutions or concentrations should be determined by the scientist.	
Positive Control	Mouse cerebellum	

### Properties

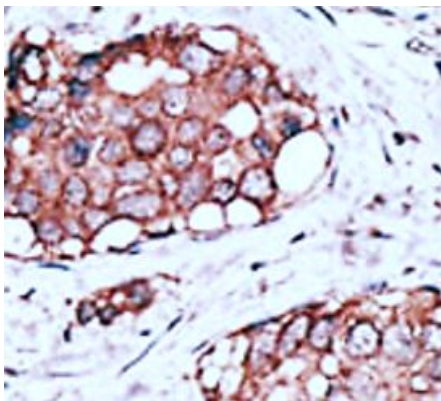
Form	Liquid
Purification	Purification with Protein G.
Buffer	PBS and 0.09% (W/V) Sodium azide.
Preservative	0.09% (W/V) Sodium azide
Storage instruction	For continuous use, store undiluted antibody at 2-8°C for up to a week. For long-term storage, aliquot and store at -20°C or below. Storage in frost free freezers is not recommended. Avoid repeated freeze/thaw cycles. Suggest spin the vial prior to opening. The antibody solution should be gently mixed before use.
Note	For laboratory research only, not for drug, diagnostic or other use.

### Bioinformation

Gene Symbol	HPCAL1
Gene Full Name	hippocalcin-like 1
Background	The protein encoded by this gene is a member of neuron-specific calcium-binding proteins family found in the retina and brain. It is highly similar to human hippocalcin protein and nearly identical to the rat and mouse hippocalcin like-1 proteins. It may be involved in the calcium-dependent regulation of rhodopsin phosphorylation and may be of relevance for neuronal signalling in the central nervous system. Several alternatively spliced transcript variants encoding the same protein have been found for this gene. [provided by RefSeq, Apr 2012]
Function	May be involved in the calcium-dependent regulation of rhodopsin phosphorylation. [UniProt]
Calculated Mw	22 kDa
Cellular Localization	Membrane; Lipid-anchor. [UniProt]

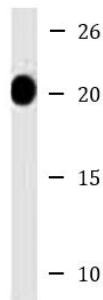
## Images

---



ARG59629 anti-VILIP3 antibody IHC-P image

Immunohistochemistry: Formalin-fixed and paraffin-embedded Human breast carcinoma tissue stained with ARG59629 anti-VILIP3 antibody.



Mouse cerebellum

ARG59629 anti-VILIP3 antibody WB image

Western blot: Mouse cerebellum lysate stained with ARG59629 anti-VILIP3 antibody.