

ARG59630 anti-Hemoglobin epsilon antibody

Package: 100 µl
Store at: -20°C

Summary

Product Description	Rabbit Polyclonal antibody recognizes Hemoglobin epsilon
Tested Reactivity	Hu
Predict Reactivity	Rb
Tested Application	FACS, WB
Host	Rabbit
Clonality	Polyclonal
Isotype	IgG
Target Name	Hemoglobin epsilon
Species	Human
Immunogen	KLH-conjugated synthetic peptide corresponding to aa. 55-83 of Human Hemoglobin epsilon.
Conjugation	Un-conjugated
Alternate Names	HBE; Epsilon-globin; Hemoglobin subunit epsilon; Hemoglobin epsilon chain

Application Instructions

Application table	Application	Dilution
	FACS	1:25
	WB	1:1000
Application Note	* The dilutions indicate recommended starting dilutions and the optimal dilutions or concentrations should be determined by the scientist.	
Positive Control	Human placenta	

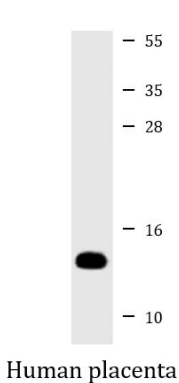
Properties

Form	Liquid
Purification	Purification with Protein A and immunogen peptide.
Buffer	PBS and 0.09% (W/V) Sodium azide.
Preservative	0.09% (W/V) Sodium azide
Storage instruction	For continuous use, store undiluted antibody at 2-8°C for up to a week. For long-term storage, aliquot and store at -20°C or below. Storage in frost free freezers is not recommended. Avoid repeated freeze/thaw cycles. Suggest spin the vial prior to opening. The antibody solution should be gently mixed before use.
Note	For laboratory research only, not for drug, diagnostic or other use.

Bioinformation

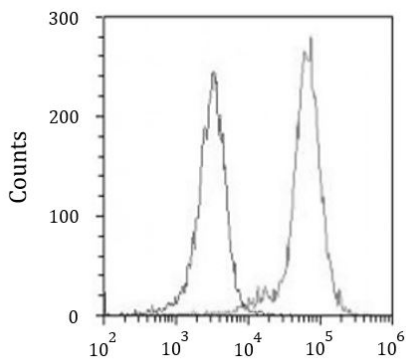
Gene Symbol	HBE1
Gene Full Name	hemoglobin, epsilon 1
Background	The epsilon globin gene (HBE) is normally expressed in the embryonic yolk sac: two epsilon chains together with two zeta chains (an alpha-like globin) constitute the embryonic hemoglobin Hb Gower I; two epsilon chains together with two alpha chains form the embryonic Hb Gower II. Both of these embryonic hemoglobins are normally supplanted by fetal, and later, adult hemoglobin. The five beta-like globin genes are found within a 45 kb cluster on chromosome 11 in the following order: 5'-epsilon - G-gamma - A-gamma - delta - beta-3' [provided by RefSeq, Jul 2008]
Function	The epsilon chain is a beta-type chain of early mammalian embryonic hemoglobin. [UniProt]
Calculated Mw	16 kDa

Images



ARG59630 anti-Hemoglobin epsilon antibody WB image

Western blot: 20 µg of Human placenta lysate stained with ARG59630 anti-Hemoglobin epsilon antibody at 1:8000 dilution.



ARG59630 anti-Hemoglobin epsilon antibody FACS image

Flow Cytometry: K562 cells were fixed with 2% paraformaldehyde (10 min) and then permeabilized with 90% methanol for 10 min. The cells were then incubated in 2% BSA to block non-specific protein-protein interactions followed by ARG59630 anti-Hemoglobin epsilon antibody (right histogram) at 1:25, 60 min at 37°C, followed by DyLight®488 labelled secondary antibody. Isotype control antibody (left histogram) was Rabbit IgG1 (1 µg/10⁶ cells) used under the same conditions. Acquisition of >10000 events was performed.