

ARG59633 anti-E-Ras antibody

Package: 100 µl
Store at: -20°C

Summary

Product Description	Rabbit Polyclonal antibody recognizes E-Ras
Tested Reactivity	Ms
Tested Application	FACS, WB
Host	Rabbit
Clonality	Polyclonal
Isotype	IgG
Target Name	E-Ras
Species	Mouse
Immunogen	KLH-conjugated synthetic peptide corresponding to aa. 19-52 of Mouse E-Ras.
Conjugation	Un-conjugated
Alternate Names	E-Ras; Embryonic stem cell-expressed Ras; HRAS2; GTPase ERas; HRASP

Application Instructions

Application table	Application	Dilution
	FACS	1:25
	WB	1:1000
Application Note	* The dilutions indicate recommended starting dilutions and the optimal dilutions or concentrations should be determined by the scientist.	
Positive Control	F9	

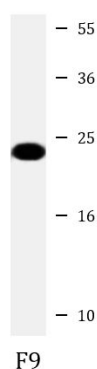
Properties

Form	Liquid
Purification	Purification with Protein A and immunogen peptide.
Buffer	PBS and 0.09% (W/V) Sodium azide.
Preservative	0.09% (W/V) Sodium azide
Storage instruction	For continuous use, store undiluted antibody at 2-8°C for up to a week. For long-term storage, aliquot and store at -20°C or below. Storage in frost free freezers is not recommended. Avoid repeated freeze/thaw cycles. Suggest spin the vial prior to opening. The antibody solution should be gently mixed before use.
Note	For laboratory research only, not for drug, diagnostic or other use.

Bioinformation

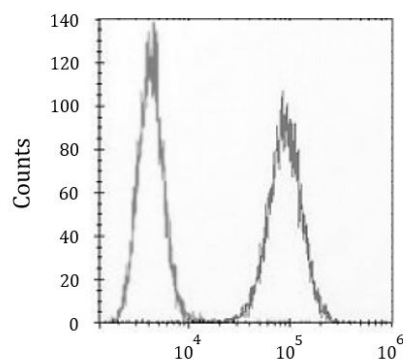
Gene Symbol	ERAS
Gene Full Name	ES cell expressed Ras
Background	This gene encodes a constitutively active member of the small GTPase Ras protein family. The encoded protein activates the phosphatidylinositol 3-kinase signal transduction pathway in undifferentiated stem cells, but is not expressed in differentiated cells. This gene may be involved in cancer and chemotherapy resistance. [provided by RefSeq, Dec 2012]
Function	Ras proteins bind GDP/GTP and possess intrinsic GTPase activity. Plays an important role in the tumor-like growth properties of embryonic stem cells (By similarity). [UniProt]
Calculated Mw	25 kDa
Cellular Localization	Cell membrane; Lipid-anchor; Cytoplasmic side. [UniProt]

Images



ARG59633 anti-E-Ras antibody WB image

Western blot: 20 µg of F9 cell lysate stained with ARG59633 anti-E-Ras antibody at 1:1000 dilution.



ARG59633 anti-E-Ras antibody FACS image

Flow Cytometry: F9 cells were fixed with 2% paraformaldehyde (10 min) and then permeabilized with 90% methanol for 10 min. The cells were then incubated in 2% BSA to block non-specific protein-protein interactions followed by ARG59633 anti-E-Ras antibody (right histogram) at 1:25, 60 min at 37°C, followed by DyLight®488 labelled secondary antibody. Isotype control antibody (left histogram) was Rabbit IgG1 (1 µg/10⁶ cells) used under the same conditions. Acquisition of > 10000 events was performed.