

ARG59643 anti-FOXF2 antibody

Package: 50 µl
Store at: -20°C

Summary

Product Description	Rabbit Polyclonal antibody recognizes FOXF2
Tested Reactivity	Hu
Predict Reactivity	Ms, Pig, Rb
Tested Application	IHC-P, WB
Host	Rabbit
Clonality	Polyclonal
Isotype	IgG
Target Name	FOXF2
Species	Human
Immunogen	Synthetic peptide around the N-terminal region of Human FOXF2. (within the following region: SSASCASSSSNSASAPSAACKSAGGGGAGAGSGGAKKASSGLRRPEKP)
Conjugation	Un-conjugated
Alternate Names	Forkhead-related transcription factor 2; Forkhead box protein F2; FREAC2; Forkhead-related activator 2; FREAC-2; FKHL6; Forkhead-related protein FKHL6

Application Instructions

Predict Reactivity Note	Predicted Homology Based On Immunogen Sequence: Mouse: 85%; Pig: 92%; Rabbit: 92%						
Application table	<table> <tr> <th>Application</th><th>Dilution</th></tr> <tr> <td>IHC-P</td><td>Assay-dependent</td></tr> <tr> <td>WB</td><td>1 µg/ml</td></tr> </table>	Application	Dilution	IHC-P	Assay-dependent	WB	1 µg/ml
Application	Dilution						
IHC-P	Assay-dependent						
WB	1 µg/ml						
Application Note	* The dilutions indicate recommended starting dilutions and the optimal dilutions or concentrations should be determined by the scientist.						

Properties

Form	Liquid
Purification	Purification with Protein A.
Buffer	PBS, 0.09% (w/v) Sodium azide and 2% Sucrose.
Preservative	0.09% (w/v) Sodium azide
Stabilizer	2% Sucrose
Concentration	Batch dependent: 0.5 - 1 mg/ml
Storage instruction	For continuous use, store undiluted antibody at 2-8°C for up to a week. For long-term storage, aliquot and store at -20°C or below. Storage in frost free freezers is not recommended. Avoid repeated freeze/thaw cycles. Suggest spin the vial prior to opening. The antibody solution should be gently mixed

before use.

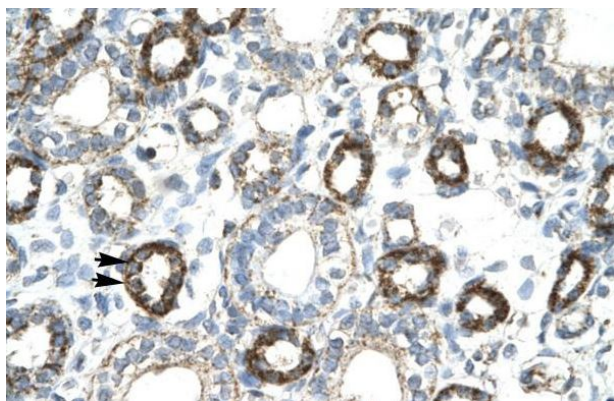
Note

For laboratory research only, not for drug, diagnostic or other use.

Bioinformation

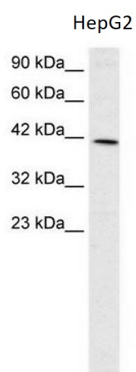
Gene Symbol	FOXF2
Gene Full Name	forkhead box F2
Background	FOXF2 encodes forkhead box F2, one of many human homologues of the <i>Drosophila melanogaster</i> transcription factor forkhead. FOXF2 is expressed in lung and placenta, and has been shown to transcriptionally activate several lung-specific genes. [provided by RefSeq, Jul 2008]
Function	Probable transcription activator for a number of lung-specific genes. [UniProt]
Calculated Mw	46 kDa
Cellular Localization	Nucleus. [UniProt]

Images



ARG59643 anti-FOXF2 antibody IHC-P image

Immunohistochemistry: Paraffin-embedded Human kidney stained with ARG59643 anti-FOXF2 antibody.



ARG59643 anti-FOXF2 antibody WB image

Western blot: HepG2 cell lysate stained with ARG59643 anti-FOXF2 antibody at 1 µg/ml dilution.