

ARG59645 anti-GPM6A antibody

Package: 50 µl
Store at: -20°C

Summary

Product Description	Rabbit Polyclonal antibody recognizes GPM6A
Tested Reactivity	Hu, Rat
Predict Reactivity	Ms, Cow, Dog, Gpig, Hrs, Rb, Zfsh
Tested Application	ICC/IF, WB
Host	Rabbit
Clonality	Polyclonal
Isotype	IgG
Target Name	GPM6A
Species	Human
Immunogen	Synthetic peptide around the C-terminal region of Human GPM6A. (within the following region: IAMVHYLMVLSANWAYVKDACRMQKYEDIKSKEEQELHDIHSTRSKERLN)
Conjugation	Un-conjugated
Alternate Names	M6A; Neuronal membrane glycoprotein M6-a; GPM6; M6a

Application Instructions

Predict Reactivity Note	Predicted Homology Based On Immunogen Sequence: Cow: 100%; Dog: 100%; Guinea Pig: 100%; Horse: 100%; Mouse: 100%; Rabbit: 100%; Zebrafish: 100%						
Application table	<table><thead><tr><th>Application</th><th>Dilution</th></tr></thead><tbody><tr><td>ICC/IF</td><td>1:250</td></tr><tr><td>WB</td><td>1 µg/ml</td></tr></tbody></table>	Application	Dilution	ICC/IF	1:250	WB	1 µg/ml
Application	Dilution						
ICC/IF	1:250						
WB	1 µg/ml						
Application Note	* The dilutions indicate recommended starting dilutions and the optimal dilutions or concentrations should be determined by the scientist.						

Properties

Form	Liquid
Purification	Affinity purified.
Buffer	PBS, 0.09% (w/v) Sodium azide and 2% Sucrose.
Preservative	0.09% (w/v) Sodium azide
Stabilizer	2% Sucrose
Concentration	Batch dependent: 0.5 - 1 mg/ml
Storage instruction	For continuous use, store undiluted antibody at 2-8°C for up to a week. For long-term storage, aliquot and store at -20°C or below. Storage in frost free freezers is not recommended. Avoid repeated freeze/thaw cycles. Suggest spin the vial prior to opening. The antibody solution should be gently mixed

before use.

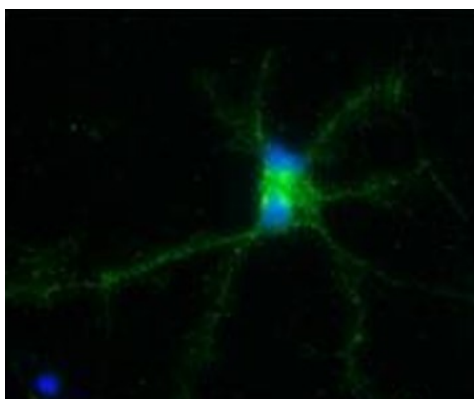
Note

For laboratory research only, not for drug, diagnostic or other use.

Bioinformation

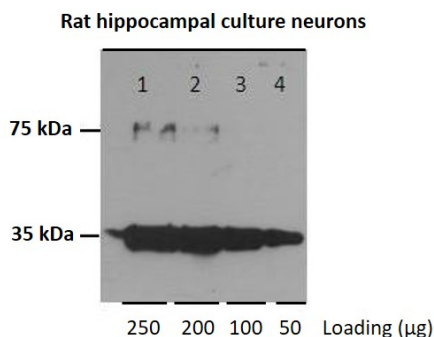
Gene Symbol	GPM6A
Gene Full Name	glycoprotein M6A
Function	Involved in neuronal differentiation, including differentiation and migration of neuronal stem cells. Plays a role in neuronal plasticity and is involved in neurite and filopodia outgrowth, filopodia motility and probably synapse formation. GPM6A-induced filopodia formation involves mitogen-activated protein kinase (MAPK) and Src signaling pathways. May be involved in neuronal NGF-dependent Ca ²⁺ influx. May be involved in regulation of endocytosis and intracellular trafficking of G-protein-coupled receptors (GPCRs); enhances internalization and recycling of mu-type opioid receptor. [UniProt]
Calculated Mw	31 kDa
Cellular Localization	Cell membrane; Multi-pass membrane protein. Cell projection, axon. Cell projection, dendritic spine. Cell projection, filopodium. Note=Localizes to cholesterol-rich lipid rafts of the plasma membrane of hippocampal neurons. Localized to plasma membrane of cell bodies and neurites of hippocampal neurons. Localized in membrane protrusions (filopodia and spines) of primary hippocampal neurons. Localized to the growth cone edge membrane of elongating axons (By similarity). [UniProt]

Images



ARG59645 anti-GPM6A antibody ICC/IF image

Immunofluorescence: Rat hippocampal culture neurons stained with ARG59645 anti-GPM6A antibody (green) at 1:250 dilution. DAPI (blue) for nuclear staining.

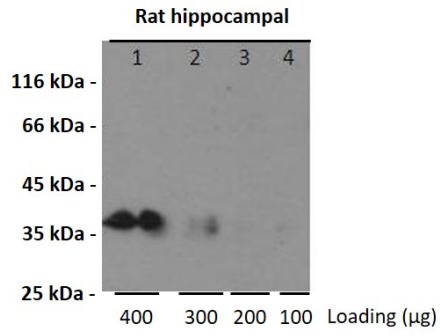


ARG59645 anti-GPM6A antibody WB image

Western blot: 250 µg, 200 µg, 100 µg and 50 µg of Rat hippocampal culture neurons stained with ARG59645 anti-GPM6A antibody at 1:1000 dilution.

ARG59645 anti-GPM6A antibody WB image

Western blot: 400 µg, 300 µg, 200 µg and 100 µg of Rat hippocampal stained with ARG59645 anti-GPM6A antibody at 1:1000 dilution.



ARG59645 anti-GPM6A antibody WB image

Western blot: Human brain lysates stained with ARG59645 anti-GPM6A antibody at 1.0 µg/ml dilution.

