

ARG59646 anti-TFIIE beta antibody

Package: 50 µl
Store at: -20°C

Summary

Product Description	Rabbit Polyclonal antibody recognizes TFIIE beta
Tested Reactivity	Hu
Predict Reactivity	Ms, Rat, Cow, Dog, Goat, Gpig, Hrs, Rb, Zfsh
Tested Application	IHC-P, WB
Host	Rabbit
Clonality	Polyclonal
Isotype	IgG
Target Name	TFIIE beta
Species	Human
Immunogen	Synthetic peptide around the N-terminal region of Human TFIIE beta. (within the following region: VEHGGSSGSKQNSDHSNGSFNLKALSGSSGYKFGVLAKIVNYMKTRHQRG)
Conjugation	Un-conjugated
Alternate Names	General transcription factor IIE subunit 2; TF2E2; TFIIE-beta; FE; Transcription initiation factor IIE subunit beta; TFIIE-B

Application Instructions

Predict Reactivity Note	Predicted Homology Based On Immunogen Sequence: Cow: 100%; Dog: 100%; Goat: 79%; Guinea Pig: 100%; Horse: 100%; Mouse: 93%; Rabbit: 100%; Rat: 100%; Zebrafish: 85%						
Application table	<table> <tr> <th>Application</th><th>Dilution</th></tr> <tr> <td>IHC-P</td><td>4 - 8 µg/ml</td></tr> <tr> <td>WB</td><td>0.2 - 1 µg/ml</td></tr> </table>	Application	Dilution	IHC-P	4 - 8 µg/ml	WB	0.2 - 1 µg/ml
Application	Dilution						
IHC-P	4 - 8 µg/ml						
WB	0.2 - 1 µg/ml						
Application Note	* The dilutions indicate recommended starting dilutions and the optimal dilutions or concentrations should be determined by the scientist.						

Properties

Form	Liquid
Purification	Affinity purified.
Buffer	PBS, 0.09% (w/v) Sodium azide and 2% Sucrose.
Preservative	0.09% (w/v) Sodium azide
Stabilizer	2% Sucrose
Concentration	Batch dependent: 0.5 - 1 mg/ml
Storage instruction	For continuous use, store undiluted antibody at 2-8°C for up to a week. For long-term storage, aliquot and store at -20°C or below. Storage in frost free freezers is not recommended. Avoid repeated

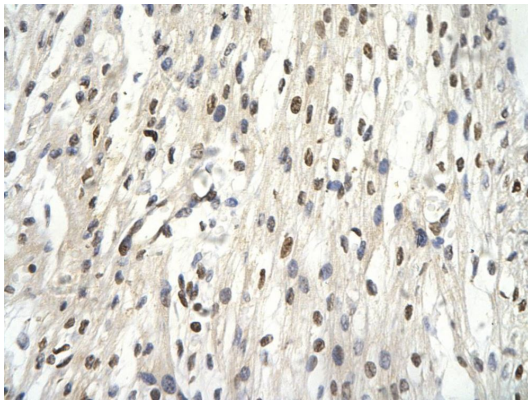
freeze/thaw cycles. Suggest spin the vial prior to opening. The antibody solution should be gently mixed before use.

Note For laboratory research only, not for drug, diagnostic or other use.

Bioinformation

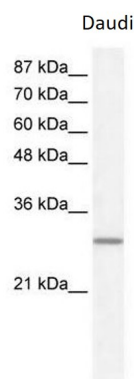
Gene Symbol	GTF2E2
Gene Full Name	general transcription factor IIE, polypeptide 2, beta 34kDa
Function	Recruits TFIIH to the initiation complex and stimulates the RNA polymerase II C-terminal domain kinase and DNA-dependent ATPase activities of TFIIH. Both TFIIH and TFIIE are required for promoter clearance by RNA polymerase. [UniProt]
Calculated Mw	33 kDa
Cellular Localization	Nucleus. [UniProt]

Images



ARG59646 anti-TFIIE beta antibody IHC-P image

Immunohistochemistry: Paraffin-embedded Human cardiac cell (epithelial cells of renal tubule) stained with ARG59646 anti-TFIIE beta antibody at 4 - 8 µg/ml dilution. (Magnification: 400X).



ARG59646 anti-TFIIE beta antibody WB image

Western blot: Daudi cell lysate stained with ARG59646 anti-TFIIE beta antibody at 0.2 - 1 µg/ml dilution.