

ARG59649 anti-HCFC1R1 antibody

Package: 50 µl
Store at: -20°C

Summary

Product Description	Rabbit Polyclonal antibody recognizes HCFC1R1
Tested Reactivity	Hu
Predict Reactivity	Ms, Rat, Cow, Dog, Goat, Hrs, Pig
Tested Application	WB
Host	Rabbit
Clonality	Polyclonal
Isotype	IgG
Target Name	HCFC1R1
Species	Human
Immunogen	Synthetic peptide around the middle region of Human HCFC1R1. (within the following region: LRGAVPMSTKRRLEEEQEPLRKQFLSEENMATHFSQLSLHNDHPYCSPM)
Conjugation	Un-conjugated
Alternate Names	HCF-1 beta-propeller-interacting protein; Host cell factor C1 regulator 1; HPIP

Application Instructions

Predict Reactivity Note	Predicted Homology Based On Immunogen Sequence: Cow: 100%; Dog: 100%; Goat: 93%; Horse: 100%; Mouse: 92%; Pig: 100%; Rat: 83%				
Application table	<table> <tr> <th>Application</th><th>Dilution</th></tr> <tr> <td>WB</td><td>0.2 - 1 µg/ml</td></tr> </table>	Application	Dilution	WB	0.2 - 1 µg/ml
Application	Dilution				
WB	0.2 - 1 µg/ml				
Application Note	* The dilutions indicate recommended starting dilutions and the optimal dilutions or concentrations should be determined by the scientist.				

Properties

Form	Liquid
Purification	Affinity purified.
Buffer	PBS, 0.09% (w/v) Sodium azide and 2% Sucrose.
Preservative	0.09% (w/v) Sodium azide
Stabilizer	2% Sucrose
Concentration	Batch dependent: 0.5 - 1 mg/ml
Storage instruction	For continuous use, store undiluted antibody at 2-8°C for up to a week. For long-term storage, aliquot and store at -20°C or below. Storage in frost free freezers is not recommended. Avoid repeated freeze/thaw cycles. Suggest spin the vial prior to opening. The antibody solution should be gently mixed before use.

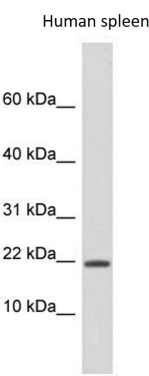
Note

For laboratory research only, not for drug, diagnostic or other use.

Bioinformation

Gene Symbol	HCFC1R1
Gene Full Name	host cell factor C1 regulator 1 (XPO1 dependent)
Function	Regulates HCFC1 activity by modulating its subcellular localization. Overexpression of HCFC1R1 leads to accumulation of HCFC1 in the cytoplasm. HCFC1R1-mediated export may provide the pool of cytoplasmic HCFC1 required for import of virion-derived VP16 into the nucleus. [UniProt]
Calculated Mw	15 kDa
Cellular Localization	Cytoplasm. Nucleus. Note=Shuttles between the nucleus and cytoplasm in a CRM1-dependent manner. [UniProt]

Images



ARG59649 anti-HCFC1R1 antibody WB image

Western blot: Human spleen lysate stained with ARG59649 anti-HCFC1R1 antibody at 0.2 - 1 µg/ml dilution.