

ARG59664 anti-alpha amylase antibody

Package: 50 µg
Store at: -20°C

Summary

Product Description	Rabbit Polyclonal antibody recognizes alpha amylase.
Tested Reactivity	Hu, Ms, Rat
Predict Reactivity	Hm
Tested Application	IHC-P, WB
Specificity	Sequence blast result indicates this antibody might react to alpha amylase 1, alpha amylase 2B and pancreatic alpha amylase (AMY2A).
Host	Rabbit
Clonality	Polyclonal
Isotype	IgG
Target Name	alpha amylase
Species	Human
Immunogen	Synthetic peptide corresponding to aa. 30-44 of Human alpha amylase. (HLFEWRWVDIALECE)
Conjugation	Un-conjugated
Alternate Names	1,4-alpha-D-glucan glucohydrolase 1; Salivary alpha-amylase; AMY1; EC 3.2.1.1; Alpha-amylase 1; PA; AMY2; HXA; AMY2; AMY3

Application Instructions

Application table	Application	Dilution
	IHC-P	0.5 - 1 µg/ml
	WB	0.1 - 0.5 µg/ml
Application Note	IHC-P: Antigen Retrieval: Heat mediation was performed in Citrate buffer (pH 6.0) for 20 min. * The dilutions indicate recommended starting dilutions and the optimal dilutions or concentrations should be determined by the scientist.	

Properties

Form	Liquid
Purification	Affinity purification with immunogen.
Buffer	0.9% NaCl, 0.2% Na ₂ HPO ₄ , 0.05% Thimerosal, 0.05% Sodium azide and 5% BSA.
Preservative	0.05% Thimerosal and 0.05% Sodium azide
Stabilizer	5% BSA
Concentration	0.5 mg/ml
Storage instruction	For continuous use, store undiluted antibody at 2-8°C for up to a week. For long-term storage, aliquot and store at -20°C or below. Storage in frost free freezers is not recommended. Avoid repeated

freeze/thaw cycles. Suggest spin the vial prior to opening. The antibody solution should be gently mixed before use.

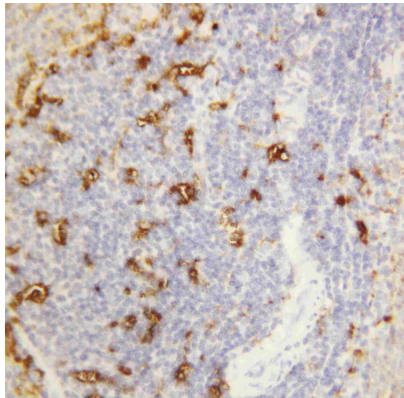
Note

For laboratory research only, not for drug, diagnostic or other use.

Bioinformation

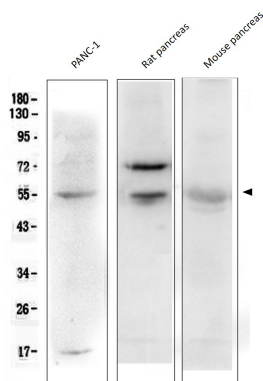
Gene Symbol	AMY1A; AMY2A; AMY2B
Gene Full Name	amylase, alpha 1A (salivary); amylase, alpha 2A (pancreatic); amylase, alpha 2B (pancreatic)
Background	Amylases are secreted proteins that hydrolyze 1,4-alpha-glucoside bonds in oligosaccharides and polysaccharides, and thus catalyze the first step in digestion of dietary starch and glycogen. The human genome has a cluster of several amylase genes that are expressed at high levels in either salivary gland or pancreas. This gene encodes an amylase isoenzyme produced by the salivary gland. Alternative splicing results in multiple transcript variants encoding the same protein. [provided by RefSeq, Jul 2008]
Calculated Mw	58 kDa
Cellular Localization	Secreted. [UniProt]

Images



ARG59664 anti-alpha amylase antibody IHC-P image

Immunohistochemistry: Paraffin-embedded Rat spleen tissue. Antigen Retrieval: Heat mediation was performed in Citrate buffer (pH 6.0, epitope retrieval solution) for 20 min. The tissue section was blocked with 10% goat serum. The tissue section was then stained with ARG59664 anti-alpha amylase antibody at 1 µg/ml, overnight at 4°C.



ARG59664 anti-alpha amylase antibody WB image

Western blot: 50 µg of samples under reducing conditions. PANC-1, Rat pancreas and Mouse pancreas lysates stained with ARG59664 anti-alpha amylase antibody at 0.5 µg/ml, overnight at 4°C.