

ARG59698 anti-CD11c antibody

Package: 100 µl
Store at: -20°C

Summary

| | |
|---------------------|---|
| Product Description | Rabbit Polyclonal antibody recognizes CD11c |
| Tested Reactivity | Hu, Ms |
| Tested Application | IHC-P, IP, WB |
| Host | Rabbit |
| Clonality | Polyclonal |
| Isotype | IgG |
| Target Name | CD11c |
| Species | Human |
| Immunogen | Synthetic peptide derived from Human CD11c. |
| Conjugation | Un-conjugated |
| Alternate Names | CD antigen CD11c; Leu M5; CD11C; SLEB6; Integrin alpha-X; Leukocyte adhesion glycoprotein p150,95 alpha chain; Leukocyte adhesion receptor p150,95; CD11 antigen-like family member C |

Application Instructions

| Application table | Application | Dilution |
|-------------------|--|----------------|
| | IHC-P | 1:50 - 1:200 |
| | IP | 1:50 |
| | WB | 1:500 - 1:2000 |
| Application Note | * The dilutions indicate recommended starting dilutions and the optimal dilutions or concentrations should be determined by the scientist. | |
| Observed Size | 150 kDa | |

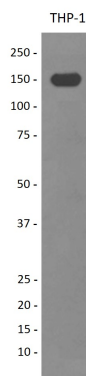
Properties

| | |
|---------------------|---|
| Form | Liquid |
| Purification | Affinity purified. |
| Buffer | PBS (pH 7.4), 0.02% Sodium azide and 50% Glycerol. |
| Preservative | 0.02% Sodium azide |
| Stabilizer | 50% Glycerol |
| Storage instruction | For continuous use, store undiluted antibody at 2-8°C for up to a week. For long-term storage, aliquot and store at -20°C. Storage in frost free freezers is not recommended. Avoid repeated freeze/thaw cycles. Suggest spin the vial prior to opening. The antibody solution should be gently mixed before use. |
| Note | For laboratory research only, not for drug, diagnostic or other use. |

Bioinformation

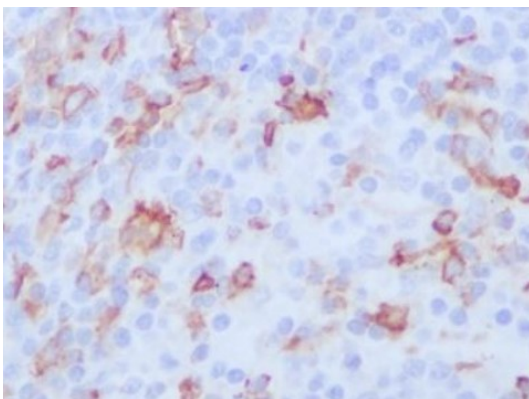
| | |
|-----------------------|--|
| Gene Symbol | ITGAX |
| Gene Full Name | integrin, alpha X (complement component 3 receptor 4 subunit) |
| Background | This gene encodes the integrin alpha X chain protein. Integrins are heterodimeric integral membrane proteins composed of an alpha chain and a beta chain. This protein combines with the beta 2 chain (ITGB2) to form a leukocyte-specific integrin referred to as inactivated-C3b (iC3b) receptor 4 (CR4). The alpha X beta 2 complex seems to overlap the properties of the alpha M beta 2 integrin in the adherence of neutrophils and monocytes to stimulated endothelium cells, and in the phagocytosis of complement coated particles. Two transcript variants encoding different isoforms have been found for this gene. [provided by RefSeq, Nov 2013] |
| Function | Integrin alpha-X/beta-2 is a receptor for fibrinogen. It recognizes the sequence G-P-R in fibrinogen. It mediates cell-cell interaction during inflammatory responses. It is especially important in monocyte adhesion and chemotaxis. [UniProt] |
| Calculated Mw | 128 kDa |
| Cellular Localization | Membrane; Single-pass type I membrane protein. [UniProt] |

Images



ARG59698 anti-CD11c antibody WB image

Western blot: THP-1 cell lysate treated with TPA and stained with ARG59698 anti-CD11c antibody.



ARG59698 anti-CD11c antibody IHC-P image

Immunohistochemistry: Paraffin-embedded Human spleen stained with ARG59698 anti-CD11c antibody.