

## ARG59712 anti-PRELP antibody

Package: 100 µl  
Store at: -20°C

### Summary

Product Description	Rabbit Polyclonal antibody recognizes PRELP
Tested Reactivity	Hu
Tested Application	FACS, IHC-P, WB
Host	Rabbit
Clonality	Polyclonal
Isotype	IgG
Target Name	PRELP
Species	Human
Immunogen	KLH-conjugated synthetic peptide between aa. 257-286 of Human PRELP.
Conjugation	Un-conjugated
Alternate Names	MST161; SLRR2A; Prolargin; Proline-arginine-rich end leucine-rich repeat protein; MSTP161

### Application Instructions

Application table	Application	Dilution
	FACS	1:10 - 1:50
	IHC-P	1:50 - 1:100
	WB	1:1000
Application Note	* The dilutions indicate recommended starting dilutions and the optimal dilutions or concentrations should be determined by the scientist.	
Positive Control	Y79	
Observed Size	43 kDa	

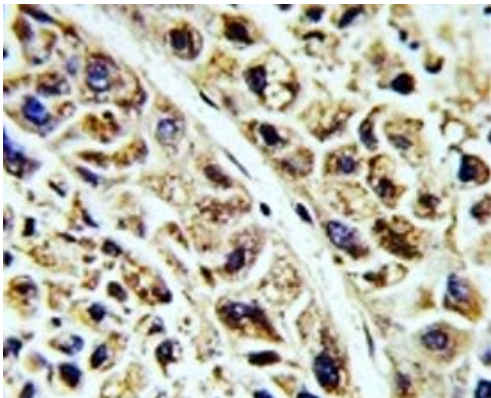
### Properties

Form	Liquid
Purification	Saturated Ammonium Sulfate precipitation followed by dialysis against PBS.
Buffer	PBS and 0.09% (W/V) Sodium azide.
Preservative	0.09% (W/V) Sodium azide
Storage instruction	For continuous use, store undiluted antibody at 2-8°C for up to a week. For long-term storage, aliquot and store at -20°C or below. Storage in frost free freezers is not recommended. Avoid repeated freeze/thaw cycles. Suggest spin the vial prior to opening. The antibody solution should be gently mixed before use.
Note	For laboratory research only, not for drug, diagnostic or other use.

Bioinformation

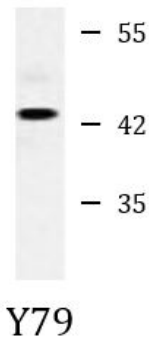
Gene Symbol	PRELP
Gene Full Name	proline/arginine-rich end leucine-rich repeat protein
Background	The protein encoded by this gene is a leucine-rich repeat protein present in connective tissue extracellular matrix. This protein functions as a molecule anchoring basement membranes to the underlying connective tissue. This protein has been shown to bind type I collagen to basement membranes and type II collagen to cartilage. It also binds the basement membrane heparan sulfate proteoglycan perlecan. This protein is suggested to be involved in the pathogenesis of Hutchinson-Gilford progeria (HGP), which is reported to lack the binding of collagen in basement membranes and cartilage. Alternatively spliced transcript variants encoding the same protein have been observed. [provided by RefSeq, Jul 2008]
Function	May anchor basement membranes to the underlying connective tissue. [UniProt]
Calculated Mw	44 kDa
Cellular Localization	Secreted, extracellular space, extracellular matrix. [UniProt]

Images



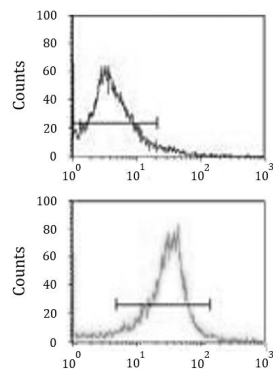
ARG59712 anti-PRELP antibody IHC-P image

Immunohistochemistry: Formalin-fixed and paraffin-embedded Human hepatocarcinoma stained with ARG59712 anti-PRELP antibody.



ARG59712 anti-PRELP antibody WB image

Western blot: 35 µg of Y79 cell lysate stained with ARG59712 anti-PRELP antibody.



#### ARG59712 anti-PRELP antibody FACS image

Flow Cytometry: WiDr cells stained with ARG59712 anti-PRELP antibody (bottom histogram) or without primary antibody as control (top histogram), followed by incubation with FITC-labelled secondary antibody.