

## ARG59796 anti-TAF1C antibody

Package: 100 µl  
Store at: -20°C

### Summary

Product Description	Rabbit Polyclonal antibody recognizes TAF1C
Tested Reactivity	Hu, Ms, Rat
Tested Application	WB
Host	Rabbit
Clonality	Polyclonal
Isotype	IgG
Target Name	TAF1C
Species	Human
Immunogen	Recombinant fusion protein corresponding to aa. 70-320 of Human TAF1C (NP_001230085.1).
Conjugation	Un-conjugated
Alternate Names	TBP-associated factor 1C; RNA polymerase I-specific TBP-associated factor 110 kDa; MGC:39976; TATA box-binding protein-associated factor 1C; SL1; TAFI110; Transcription initiation factor SL1/TIF-IB subunit C; TATA box-binding protein-associated factor RNA polymerase I subunit C; TAFI95

### Application Instructions

Application table	Application	Dilution
	WB	1:500 - 1:2000
Application Note	* The dilutions indicate recommended starting dilutions and the optimal dilutions or concentrations should be determined by the scientist.	
Positive Control	Mouse thymus and 293T	
Observed Size	110 kDa	

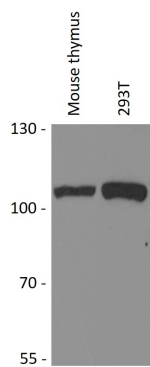
### Properties

Form	Liquid
Purification	Affinity purified.
Buffer	PBS (pH 7.3), 0.02% Sodium azide and 50% Glycerol.
Preservative	0.02% Sodium azide
Stabilizer	50% Glycerol
Storage instruction	For continuous use, store undiluted antibody at 2-8°C for up to a week. For long-term storage, aliquot and store at -20°C. Storage in frost free freezers is not recommended. Avoid repeated freeze/thaw cycles. Suggest spin the vial prior to opening. The antibody solution should be gently mixed before use.
Note	For laboratory research only, not for drug, diagnostic or other use.

Bioinformation

Gene Symbol	TAF1C
Gene Full Name	TATA box binding protein (TBP)-associated factor, RNA polymerase I, C, 110kDa
Background	Initiation of transcription by RNA polymerase I requires the formation of a complex composed of the TATA-binding protein (TBP) and three TBP-associated factors (TAFs) specific for RNA polymerase I. This complex, known as SL1, binds to the core promoter of ribosomal RNA genes to position the polymerase properly and acts as a channel for regulatory signals. This gene encodes the largest SL1-specific TAF. Multiple alternatively spliced transcript variants encoding different isoforms have been identified. [provided by RefSeq, Jul 2011]
Function	Component of the transcription factor SL1/TIF-IB complex, which is involved in the assembly of the PIC (preinitiation complex) during RNA polymerase I-dependent transcription. The rate of PIC formation probably is primarily dependent on the rate of association of SL1/TIF-IB with the rDNA promoter. SL1/TIF-IB is involved in stabilization of nucleolar transcription factor 1/UBTF on rDNA. Formation of SL1/TIF-IB excludes the association of TBP with TFIID subunits. Recruits RNA polymerase I to the rRNA gene promoter via interaction with RRN3. [UniProt]
Calculated Mw	95 kDa
Cellular Localization	Nucleus. [UniProt]

Images



ARG59796 anti-TAF1C antibody WB image

Western blot: 25 µg of Mouse thymus and 293T cell lysates stained with ARG59796 anti-TAF1C antibody at 1:1000 dilution.