

## ARG59800 anti-MTGR1 antibody

Package: 100 µl  
Store at: -20°C

### Summary

Product Description	Rabbit Polyclonal antibody recognizes MTGR1
Tested Reactivity	Hu, Ms, Rat
Tested Application	ICC/IF, WB
Host	Rabbit
Clonality	Polyclonal
Isotype	IgG
Target Name	MTGR1
Species	Human
Immunogen	Recombinant fusion protein corresponding to aa. 325-604 of Human MTGR1 (NP_005084.1).
Conjugation	Un-conjugated
Alternate Names	EHT; MTG8-related protein 1; ETO homologous on chromosome 20; MTGR1; p85; ZMYND3; Protein CBFA2T2; MTG8-like protein; Myeloid translocation-related protein 1

### Application Instructions

Application table	Application	Dilution
	ICC/IF	1:50 - 1:100
	WB	1:500 - 1:2000
Application Note	* The dilutions indicate recommended starting dilutions and the optimal dilutions or concentrations should be determined by the scientist.	
Positive Control	Rat brain, Mouse brain and Raji	
Observed Size	72 kDa	

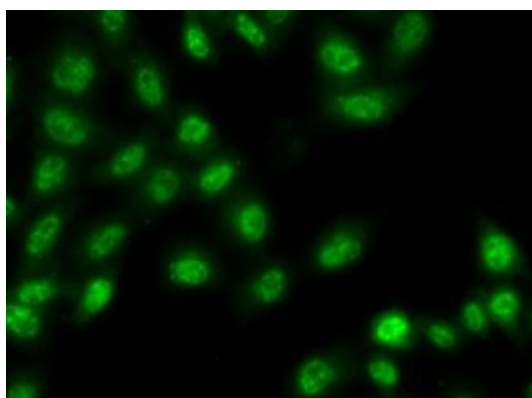
### Properties

Form	Liquid
Purification	Affinity purified.
Buffer	PBS (pH 7.3), 0.02% Sodium azide and 50% Glycerol.
Preservative	0.02% Sodium azide
Stabilizer	50% Glycerol
Storage instruction	For continuous use, store undiluted antibody at 2-8°C for up to a week. For long-term storage, aliquot and store at -20°C. Storage in frost free freezers is not recommended. Avoid repeated freeze/thaw cycles. Suggest spin the vial prior to opening. The antibody solution should be gently mixed before use.
Note	For laboratory research only, not for drug, diagnostic or other use.

## Bioinformation

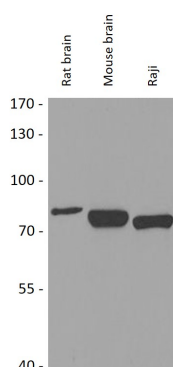
Gene Symbol	CBFA2T2
Gene Full Name	core-binding factor, runt domain, alpha subunit 2; translocated to, 2
Background	In acute myeloid leukemia, especially in the M2 subtype, the t(8;21)(q22;q22) translocation is one of the most frequent karyotypic abnormalities. The translocation produces a chimeric gene made up of the 5'-region of the RUNX1 (AML1) gene fused to the 3'-region of the CBFA2T1 (MTG8) gene. The chimeric protein is thought to associate with the nuclear corepressor/histone deacetylase complex to block hematopoietic differentiation. The protein encoded by this gene binds to the AML1-MTG8 complex and may be important in promoting leukemogenesis. Several transcript variants are thought to exist for this gene, but the full-length natures of only three have been described. [provided by RefSeq, Jul 2008]
Function	May function as a complex with the chimeric protein RUNX1/AML1-CBFA2T1/MTG8 which is produced in acute myeloid leukemia with the chromosomal translocation t(8;21). May thus be involved in the repression of AML1-dependent transcription and the induction of G-CSF/CSF3-dependent cell growth. May be a tumor suppressor gene candidate involved in myeloid tumors with the deletion of the 20q11 region. [UniProt]
Calculated Mw	67 kDa
Cellular Localization	Nucleus. [UniProt]

## Images



ARG59800 anti-MTGR1 antibody ICC/IF image

Immunofluorescence: U2OS cells stained with ARG59800 anti-MTGR1 antibody.



ARG59800 anti-MTGR1 antibody WB image

Western blot: 25 µg of Rat brain, Mouse brain and Raji cell lysates stained with ARG59800 anti-MTGR1 antibody at 1:1000 dilution.