

## ARG59830 anti-BET1 antibody

Package: 100 µl  
Store at: -20°C

### Summary

Product Description	Rabbit Polyclonal antibody recognizes BET1
Tested Reactivity	Hu
Tested Application	WB
Host	Rabbit
Clonality	Polyclonal
Isotype	IgG
Target Name	BET1
Species	Human
Immunogen	Recombinant fusion protein corresponding to aa. 1-94 of Human BET1 (NP_005859.1).
Conjugation	Un-conjugated
Alternate Names	Golgi vesicular membrane-trafficking protein p18; HBET1; BET1 homolog; hBET1

### Application Instructions

Application table	Application	Dilution
	WB	1:500 - 1:2000
Application Note	* The dilutions indicate recommended starting dilutions and the optimal dilutions or concentrations should be determined by the scientist.	
Positive Control	HeLa	
Observed Size	13 kDa	

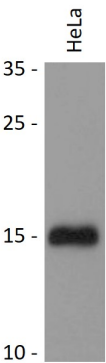
### Properties

Form	Liquid
Purification	Affinity purified.
Buffer	PBS (pH 7.3), 0.02% Sodium azide and 50% Glycerol.
Preservative	0.02% Sodium azide
Stabilizer	50% Glycerol
Storage instruction	For continuous use, store undiluted antibody at 2-8°C for up to a week. For long-term storage, aliquot and store at -20°C. Storage in frost free freezers is not recommended. Avoid repeated freeze/thaw cycles. Suggest spin the vial prior to opening. The antibody solution should be gently mixed before use.
Note	For laboratory research only, not for drug, diagnostic or other use.

Bioinformation

Gene Symbol	BET1
Gene Full Name	Bet1 golgi vesicular membrane trafficking protein
Background	This gene encodes a golgi-associated membrane protein that participates in vesicular transport from the endoplasmic reticulum (ER) to the Golgi complex. The encoded protein functions as a soluble N-ethylmaleimide-sensitive factor attachment protein receptor and may be involved in the docking of ER-derived vesicles with the cis-Golgi membrane. Alternatively spliced transcript variants encoding different isoforms have been described but their full-length nature has not been determined. [provided by RefSeq, Jul 2008]
Function	Required for vesicular transport from the ER to the Golgi complex. Functions as a SNARE involved in the docking process of ER-derived vesicles with the cis-Golgi membrane (By similarity). [UniProt]
Calculated Mw	13 kDa
Cellular Localization	Endoplasmic reticulum membrane; Single-pass type IV membrane protein. Golgi apparatus, cis-Golgi network membrane. Golgi apparatus membrane. Note=Concentrated most in the intermediate compartment/cis-Golgi network and the cis-Golgi cisternae 1 and 2. Greatly reduced in concentration at the trans end of the Golgi apparatus (By similarity). [UniProt]

Images



ARG59830 anti-BET1 antibody WB image

Western blot: 25 µg of HeLa cell lysate stained with ARG59830 anti-BET1 antibody at 1:3000 dilution.