

## ARG59831 anti-TRAFD1 antibody

Package: 100 µl  
Store at: -20°C

### Summary

Product Description	Rabbit Polyclonal antibody recognizes TRAFD1
Tested Reactivity	Hu
Tested Application	WB
Host	Rabbit
Clonality	Polyclonal
Isotype	IgG
Target Name	TRAFD1
Species	Human
Immunogen	Recombinant fusion protein corresponding to aa. 1-260 of Human TRAFD1 (NP_006691.1).
Conjugation	Un-conjugated
Alternate Names	TRAF-type zinc finger domain-containing protein 1; FLN29; Protein FLN29

### Application Instructions

Application table	Application	Dilution
	WB	1:500 - 1:1000
Application Note	* The dilutions indicate recommended starting dilutions and the optimal dilutions or concentrations should be determined by the scientist.	
Positive Control	A-375	
Observed Size	78 kDa	

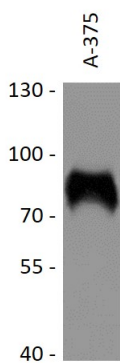
### Properties

Form	Liquid
Purification	Affinity purified.
Buffer	PBS (pH 7.3), 0.02% Sodium azide and 50% Glycerol.
Preservative	0.02% Sodium azide
Stabilizer	50% Glycerol
Storage instruction	For continuous use, store undiluted antibody at 2-8°C for up to a week. For long-term storage, aliquot and store at -20°C. Storage in frost free freezers is not recommended. Avoid repeated freeze/thaw cycles. Suggest spin the vial prior to opening. The antibody solution should be gently mixed before use.
Note	For laboratory research only, not for drug, diagnostic or other use.

Bioinformation

Gene Symbol	TRAFD1
Gene Full Name	TRAF-type zinc finger domain containing 1
Background	The innate immune system confers host defense against viral and microbial infection, and TRAFD1 is a negative feedback regulator that controls excessive immune responses (Sanada et al., 2008 [PubMed 18849341]).[supplied by OMIM, Dec 2009]
Function	Negative feedback regulator that controls excessive innate immune responses. Regulates both Toll-like receptor 4 (TLR4) and DDX58/RIG1-like helicases (RLH) pathways. May inhibit the LTR pathway by direct interaction with TRAF6 and attenuation of NF-kappa-B activation. May negatively regulate the RLH pathway downstream from MAVS and upstream of NF-kappa-B and IRF3 (By similarity). [UniProt]
Calculated Mw	65 kDa

Images



ARG59831 anti-TRAFD1 antibody WB image

Western blot: 25 µg of A-375 cell lysate stained with ARG59831 anti-TRAFD1 antibody at 1:1000 dilution.