

ARG59859 anti-PREPL antibody

Package: 100 µl
Store at: -20°C

Summary

Product Description	Rabbit Polyclonal antibody recognizes PREPL
Tested Reactivity	Hu, Ms, Rat
Tested Application	ICC/IF, WB
Host	Rabbit
Clonality	Polyclonal
Isotype	IgG
Target Name	PREPL
Species	Human
Immunogen	Recombinant fusion protein corresponding to aa. 578-727 of Human PREPL (NP_006027.2).
Conjugation	Un-conjugated
Alternate Names	Prolyl endopeptidase-like; Prolylendopeptidase-like; EC 3.4.21.-

Application Instructions

Application table	Application	Dilution
	ICC/IF	1:50 - 1:200
	WB	1:500 - 1:2000
Application Note	* The dilutions indicate recommended starting dilutions and the optimal dilutions or concentrations should be determined by the scientist.	
Positive Control	Rat brain, Mouse brain and U-87MG	
Observed Size	75 kDa	

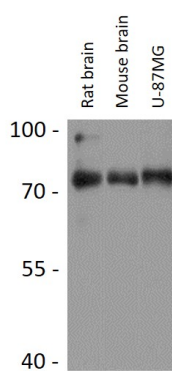
Properties

Form	Liquid
Purification	Affinity purified.
Buffer	PBS (pH 7.3), 0.02% Sodium azide and 50% Glycerol.
Preservative	0.02% Sodium azide
Stabilizer	50% Glycerol
Storage instruction	For continuous use, store undiluted antibody at 2-8°C for up to a week. For long-term storage, aliquot and store at -20°C. Storage in frost free freezers is not recommended. Avoid repeated freeze/thaw cycles. Suggest spin the vial prior to opening. The antibody solution should be gently mixed before use.
Note	For laboratory research only, not for drug, diagnostic or other use.

Bioinformation

Gene Symbol	PREPL
Gene Full Name	prolyl endopeptidase-like
Background	The protein encoded by this gene belongs to the prolyl oligopeptidase subfamily of serine peptidases. Mutations in this gene have been associated with hypotonia-cystinuria syndrome, also known as the 2p21 deletion syndrome. Several alternatively spliced transcript variants encoding either the same or different isoforms have been described for this gene.[provided by RefSeq, Jan 2010]
Function	Probable serine peptidase whose precise substrate specificity remains unclear. Does not cleave peptides after a arginine or lysine residue. [UniProt]
Calculated Mw	84 kDa
Cellular Localization	Cytoplasm, cytosol. [UniProt]

Images



ARG59859 anti-PREPL antibody WB image

Western blot: 25 µg of Rat brain, Mouse brain and U-87MG cell lysates stained with ARG59859 anti-PREPL antibody at 1:3000 dilution.