

## ARG59897 anti-Neuroserpin antibody

Package: 50 µg  
Store at: -20°C

### Summary

Product Description	Rabbit Polyclonal antibody recognizes Neuroserpin
Tested Reactivity	Hu, Ms, Rat
Tested Application	WB
Host	Rabbit
Clonality	Polyclonal
Isotype	IgG
Target Name	Neuroserpin
Species	Human
Immunogen	Synthetic peptide corresponding to aa. 272-310 of Human Neuroserpin. (KAQLVEEWANSVKKQKVEVYLPRFTVEQEIDLKDV LKAL)
Conjugation	Un-conjugated
Alternate Names	Peptidase inhibitor 12; neuroserpin; Neuroserpin; Serpin I1; PI12; PI-12

### Application Instructions

Application table	Application	Dilution
	WB	0.1 - 0.5 µg/ml
Application Note	* The dilutions indicate recommended starting dilutions and the optimal dilutions or concentrations should be determined by the scientist.	
Observed Size	45 kDa	

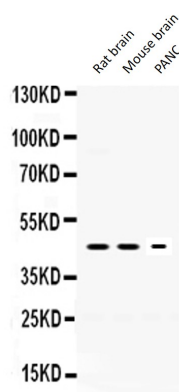
### Properties

Form	Liquid
Purification	Affinity purification with immunogen.
Buffer	0.2% Na <sub>2</sub> HPO <sub>4</sub> , 0.9% NaCl, 0.05% Sodium azide and 5% BSA.
Preservative	0.05% Sodium azide
Stabilizer	5% BSA
Concentration	0.5 mg/ml
Storage instruction	For continuous use, store undiluted antibody at 2-8°C for up to a week. For long-term storage, aliquot and store at -20°C or below. Storage in frost free freezers is not recommended. Avoid repeated freeze/thaw cycles. Suggest spin the vial prior to opening. The antibody solution should be gently mixed before use.
Note	For laboratory research only, not for drug, diagnostic or other use.

Bioinformation

Gene Symbol	SERPINI1
Gene Full Name	serpin peptidase inhibitor, clade I (neuroserpin), member 1
Background	This gene encodes a member of the serpin superfamily of serine proteinase inhibitors. The protein is primarily secreted by axons in the brain, and preferentially reacts with and inhibits tissue-type plasminogen activator. It is thought to play a role in the regulation of axonal growth and the development of synaptic plasticity. Mutations in this gene result in familial encephalopathy with neuroserpin inclusion bodies (FENIB), which is a dominantly inherited form of familial encephalopathy and epilepsy characterized by the accumulation of mutant neuroserpin polymers. Multiple alternatively spliced variants, encoding the same protein, have been identified. [provided by RefSeq, Jul 2008]
Function	Serine protease inhibitor that inhibits plasminogen activators and plasmin but not thrombin. May be involved in the formation or reorganization of synaptic connections as well as for synaptic plasticity in the adult nervous system. May protect neurons from cell damage by tissue-type plasminogen activator. [UniProt]
Calculated Mw	46 kDa
Cellular Localization	Secreted. Cytoplasmic vesicle, secretory vesicle lumen. Perikaryon. [UniProt]

Images



ARG59897 anti-Neuroserpin antibody WB image

Western blot: 50 µg of Rat brain, 50 µg of Mouse brain and 40 µg of PANC whole cell lysate stained with ARG59897 anti-Neuroserpin antibody at 0.5 µg/ml dilution.