

## ARG59936 anti-CANT1 antibody

Package: 100 µl  
Store at: -20°C

### Summary

Product Description	Rabbit Polyclonal antibody recognizes CANT1
Tested Reactivity	Hu
Tested Application	WB
Host	Rabbit
Clonality	Polyclonal
Isotype	IgG
Target Name	CANT1
Species	Human
Immunogen	Recombinant fusion protein corresponding to aa. 102-401 of Human CANT1 (NP_001153245.1).
Conjugation	Un-conjugated
Alternate Names	Apyrase homolog; Soluble calcium-activated nucleotidase 1; EC 3.6.1.6; Putative MAPK-activating protein PM09; DBQD; SHAPY; Putative NF-kappa-B-activating protein 107; SCAN-1; SCAN1

### Application Instructions

Application table	Application	Dilution
	WB	1:500 - 1:2000
Application Note	* The dilutions indicate recommended starting dilutions and the optimal dilutions or concentrations should be determined by the scientist.	
Positive Control	U-251MG	
Observed Size	45 kDa	

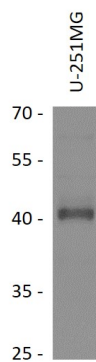
### Properties

Form	Liquid
Purification	Affinity purified.
Buffer	PBS (pH 7.3), 0.02% Sodium azide and 50% Glycerol.
Preservative	0.02% Sodium azide
Stabilizer	50% Glycerol
Storage instruction	For continuous use, store undiluted antibody at 2-8°C for up to a week. For long-term storage, aliquot and store at -20°C. Storage in frost free freezers is not recommended. Avoid repeated freeze/thaw cycles. Suggest spin the vial prior to opening. The antibody solution should be gently mixed before use.
Note	For laboratory research only, not for drug, diagnostic or other use.

Bioinformation

Gene Symbol	CANT1
Gene Full Name	calcium activated nucleotidase 1
Background	This protein encoded by this gene belongs to the apyrase family. It functions as a calcium-dependent nucleotidase with a preference for UDP. Mutations in this gene are associated with Desbuquois dysplasia with hand anomalies. Alternatively spliced transcript variants have been noted for this gene.[provided by RefSeq, Mar 2010]
Function	Calcium-dependent nucleotidase with a preference for UDP. The order of activity with different substrates is UDP > GDP > UTP > GTP. Has very low activity towards ADP and even lower activity towards ATP. Does not hydrolyze AMP and GMP. Involved in proteoglycan synthesis. [UniProt]
Calculated Mw	45 kDa
PTM	N-glycosylated. [UniProt]
Cellular Localization	Endoplasmic reticulum membrane; Single-pass type II membrane protein. Golgi apparatus, Golgi stack membrane; Single-pass type II membrane protein. Cell membrane. Note=Processed form: Secreted. [UniProt]

Images



ARG59936 anti-CANT1 antibody WB image

Western blot: 25 µg of U-251MG cell lysate stained with ARG59936 anti-CANT1 antibody at 1:1000 dilution.