

ARG59942 anti-KIF1B antibody

Package: 100 µl
Store at: -20°C

Summary

Product Description	Rabbit Polyclonal antibody recognizes KIF1B
Tested Reactivity	Hu, Ms, Rat
Tested Application	WB
Host	Rabbit
Clonality	Polyclonal
Isotype	IgG
Target Name	KIF1B
Species	Human
Immunogen	Recombinant fusion protein corresponding to aa. 1501-1770 of Human KIF1B (NP_055889.2).
Conjugation	Un-conjugated
Alternate Names	Kinesin-like protein KIF1B; HMSNII; KLP; Klp; CMT2A1; NBLST1; CMT2A; CMT2

Application Instructions

Application table	Application	Dilution
	WB	1:500 - 1:2000
Application Note	* The dilutions indicate recommended starting dilutions and the optimal dilutions or concentrations should be determined by the scientist.	
Positive Control	SKOV3	
Observed Size	204 kDa	

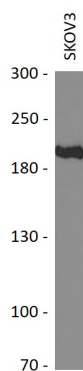
Properties

Form	Liquid
Purification	Affinity purified.
Buffer	PBS (pH 7.3), 0.02% Sodium azide and 50% Glycerol.
Preservative	0.02% Sodium azide
Stabilizer	50% Glycerol
Storage instruction	For continuous use, store undiluted antibody at 2-8°C for up to a week. For long-term storage, aliquot and store at -20°C. Storage in frost free freezers is not recommended. Avoid repeated freeze/thaw cycles. Suggest spin the vial prior to opening. The antibody solution should be gently mixed before use.
Note	For laboratory research only, not for drug, diagnostic or other use.

Bioinformation

Gene Symbol	KIF1B
Gene Full Name	kinesin family member 1B
Background	This gene encodes a motor protein that transports mitochondria and synaptic vesicle precursors. Mutations in this gene cause Charcot-Marie-Tooth disease, type 2A1. [provided by RefSeq, Jul 2008]
Function	Motor for anterograde transport of mitochondria. Has a microtubule plus end-directed motility. Isoform 2 is required for induction of neuronal apoptosis. [UniProt]
Calculated Mw	204 kDa
Cellular Localization	Cytoplasmic vesicle. Cytoplasm, cytoskeleton. Mitochondrion. Note=Colocalizes with synaptophysin at synaptic cytoplasmic transport vesicles in the neurites of hippocampal neurons. [UniProt]

Images



ARG59942 anti-KIF1B antibody WB image

Western blot: 25 µg of SKOV3 cell lysate stained with ARG59942 anti-KIF1B antibody at 1:1000 dilution.