

ARG59946 anti-RPL13 antibody

Package: 100 µl
Store at: -20°C

Summary

| | |
|---------------------|---|
| Product Description | Rabbit Polyclonal antibody recognizes RPL13 |
| Tested Reactivity | Hu, Ms, Rat |
| Tested Application | ICC/IF, IHC-P, WB |
| Host | Rabbit |
| Clonality | Polyclonal |
| Isotype | IgG |
| Target Name | RPL13 |
| Species | Human |
| Immunogen | Recombinant fusion protein corresponding to aa. 1-211 of Human RPL13 (NP_150254.1). |
| Conjugation | Un-conjugated |
| Alternate Names | 60S ribosomal protein L13; D16S44E; L13; Breast basic conserved protein 1; BBC1; D16S444E |

Application Instructions

| Application table | Application | Dilution |
|-------------------|--|----------------|
| | ICC/IF | 1:50 - 1:200 |
| | IHC-P | 1:50 - 1:200 |
| | WB | 1:500 - 1:2000 |
| Application Note | * The dilutions indicate recommended starting dilutions and the optimal dilutions or concentrations should be determined by the scientist. | |
| Positive Control | Mouse spleen and 293T | |
| Observed Size | 24 kDa | |

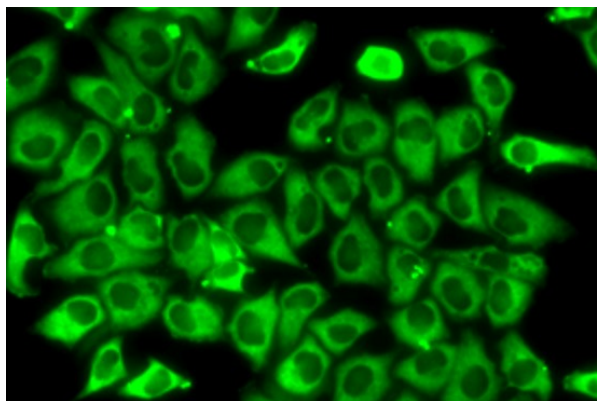
Properties

| | |
|---------------------|---|
| Form | Liquid |
| Purification | Affinity purified. |
| Buffer | PBS (pH 7.3), 0.02% Sodium azide and 50% Glycerol. |
| Preservative | 0.02% Sodium azide |
| Stabilizer | 50% Glycerol |
| Storage instruction | For continuous use, store undiluted antibody at 2-8°C for up to a week. For long-term storage, aliquot and store at -20°C. Storage in frost free freezers is not recommended. Avoid repeated freeze/thaw cycles. Suggest spin the vial prior to opening. The antibody solution should be gently mixed before use. |

Bioinformation

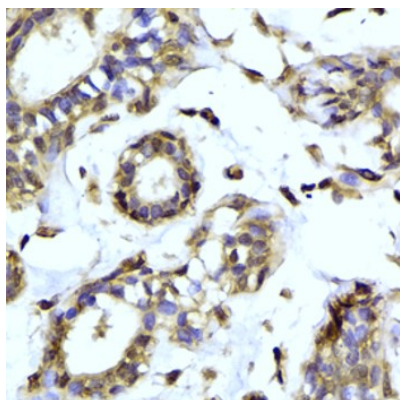
| | |
|----------------|---|
| Gene Symbol | RPL13 |
| Gene Full Name | ribosomal protein L13 |
| Background | Ribosomes, the organelles that catalyze protein synthesis, consist of a small 40S subunit and a large 60S subunit. Together these subunits are composed of 4 RNA species and approximately 80 structurally distinct proteins. This gene encodes a ribosomal protein that is a component of the 60S subunit. The protein belongs to the L13E family of ribosomal proteins. It is located in the cytoplasm. This gene is expressed at significantly higher levels in benign breast lesions than in breast carcinomas. Alternatively spliced transcript variants encoding distinct isoforms have been found for this gene. As is typical for genes encoding ribosomal proteins, there are multiple processed pseudogenes of this gene dispersed through the genome. [provided by RefSeq, Jul 2011] |
| Calculated Mw | 24 kDa |

Images



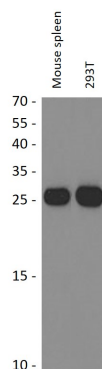
ARG59946 anti-RPL13 antibody ICC/IF image

Immunofluorescence: MCF7 cells stained with ARG59946 anti-RPL13 antibody.



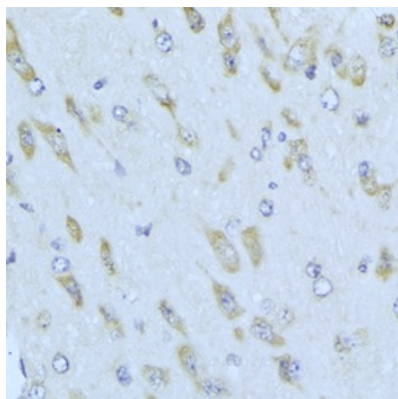
ARG59946 anti-RPL13 antibody IHC-P image

Immunohistochemistry: Paraffin-embedded Human breast stained with ARG59946 anti-RPL13 antibody at 1:100 dilution.



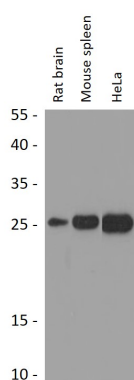
ARG59946 anti-RPL13 antibody WB image

Western blot: 25 µg of Mouse spleen and 293T cell lysates stained with ARG59946 anti-RPL13 antibody at 1:1000 dilution.



ARG59946 anti-RPL13 antibody IHC-P image

Immunohistochemistry: Paraffin-embedded Mouse brain stained with ARG59946 anti-RPL13 antibody at 1:100 dilution.



ARG59946 anti-RPL13 antibody WB image

Western blot: 25 µg of Rat brain, Mouse spleen and HeLa cell lysates stained with ARG59946 anti-RPL13 antibody at 1:1000 dilution through one-step method.