

ARG59969 anti-OSGEPL1 antibody

Package: 100 µl
Store at: -20°C

Summary

Product Description	Rabbit Polyclonal antibody recognizes OSGEPL1
Tested Reactivity	Hu, Ms, Rat
Tested Application	IHC-P, WB
Host	Rabbit
Clonality	Polyclonal
Isotype	IgG
Target Name	OSGEPL1
Species	Human
Immunogen	Recombinant fusion protein corresponding to aa. 1-270 of Human OSGEPL1 (NP_071748.2).
Conjugation	Un-conjugated
Alternate Names	EC 2.3.1.234; tRNA threonylcarbamoyladenosine biosynthesis protein OSGEPL1; Qri7; N6-L-threonylcarbamoyladenosine synthase; t; O-sialoglycoprotein endopeptidase-like protein 1; 6; Probable tRNA N6-adenosine threonylcarbamoyltransferase, mitochondrial

Application Instructions

Application table	Application	Dilution
	IHC-P	1:50 - 1:100
	WB	1:500 - 1:2000
Application Note	* The dilutions indicate recommended starting dilutions and the optimal dilutions or concentrations should be determined by the scientist.	
Positive Control	Rat liver and Mouse testis	
Observed Size	45 kDa	

Properties

Form	Liquid
Purification	Affinity purified.
Buffer	PBS (pH 7.3), 0.02% Sodium azide and 50% Glycerol.
Preservative	0.02% Sodium azide
Stabilizer	50% Glycerol
Storage instruction	For continuous use, store undiluted antibody at 2-8°C for up to a week. For long-term storage, aliquot and store at -20°C. Storage in frost free freezers is not recommended. Avoid repeated freeze/thaw cycles. Suggest spin the vial prior to opening. The antibody solution should be gently mixed before use.

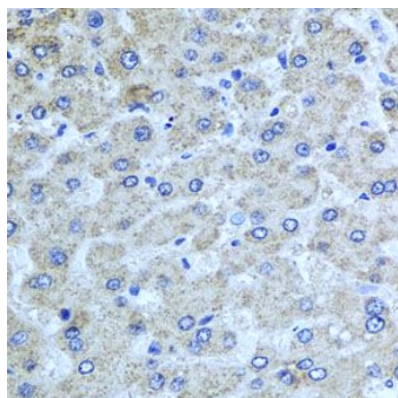
Note

For laboratory research only, not for drug, diagnostic or other use.

Bioinformation

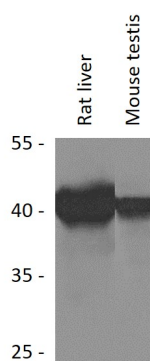
Gene Symbol	OSGEPL1
Gene Full Name	O-sialoglycoprotein endopeptidase-like 1
Function	Required for the formation of a threonylcarbamoyl group on adenosine at position 37 (t(6)A37) in mitochondrial tRNAs that read codons beginning with adenine. Probably involved in the transfer of the threonylcarbamoyl moiety of threonylcarbamoyl-AMP (TC-AMP) to the N6 group of A37. Involved in mitochondrial genome maintenance. [UniProt]
Calculated Mw	45 kDa
Cellular Localization	Mitochondrion. [UniProt]

Images



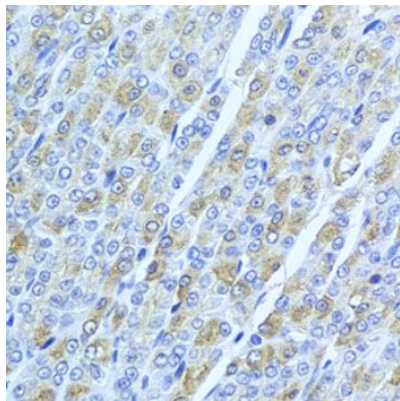
ARG59969 anti-OSGEPL1 antibody IHC-P image

Immunohistochemistry: Paraffin-embedded Human liver injury stained with ARG59969 anti-OSGEPL1 antibody at 1:100 dilution.



ARG59969 anti-OSGEPL1 antibody WB image

Western blot: 25 µg of Rat liver and Mouse testis lysates stained with ARG59969 anti-OSGEPL1 antibody at 1:1000 dilution.



ARG59969 anti-OSGEPL1 antibody IHC-P image

Immunohistochemistry: Paraffin-embedded Mouse stomach stained with ARG59969 anti-OSGEPL1 antibody at 1:100 dilution.