

ARG59999 anti-STOML2 / SLP-2 antibody

Package: 100 µl
Store at: -20°C

Summary

Product Description	Rabbit Polyclonal antibody recognizes STOML2 / SLP-2
Tested Reactivity	Hu, Ms, Rat
Tested Application	IHC-P, WB
Host	Rabbit
Clonality	Polyclonal
Isotype	IgG
Target Name	STOML2 / SLP-2
Species	Human
Immunogen	Recombinant fusion protein corresponding to aa. 29-356 of Human STOML2 (NP_038470.1).
Conjugation	Un-conjugated
Alternate Names	Stomatin-like protein 2, mitochondrial; HSPC108; Paraprotein target 7; SLP-2; EPB72-like protein 2; Paratarg-7

Application Instructions

Application table	Application	Dilution
	IHC-P	1:50 - 1:200
	WB	1:500 - 1:2000
Application Note	* The dilutions indicate recommended starting dilutions and the optimal dilutions or concentrations should be determined by the scientist.	
Positive Control	Mouse liver and A549	
Observed Size	39 kDa, 42 kDa	

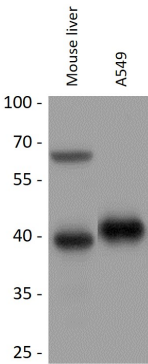
Properties

Form	Liquid
Purification	Affinity purified.
Buffer	PBS (pH 7.3), 0.02% Sodium azide and 50% Glycerol.
Preservative	0.02% Sodium azide
Stabilizer	50% Glycerol
Storage instruction	For continuous use, store undiluted antibody at 2-8°C for up to a week. For long-term storage, aliquot and store at -20°C. Storage in frost free freezers is not recommended. Avoid repeated freeze/thaw cycles. Suggest spin the vial prior to opening. The antibody solution should be gently mixed before use.
Note	For laboratory research only, not for drug, diagnostic or other use.

Bioinformation

Gene Symbol	STOML2
Gene Full Name	stomatin (EPB72)-like 2
Function	Mitochondrial protein that probably regulates the biogenesis and the activity of mitochondria. Stimulates cardiolipin biosynthesis, binds cardiolipin-enriched membranes where it recruits and stabilizes some proteins including prohibitin and may therefore act in the organization of functional microdomains in mitochondrial membranes. Through regulation of the mitochondrial function may play a role into several biological processes including cell migration, cell proliferation, T-cell activation, calcium homeostasis and cellular response to stress. May play a role in calcium homeostasis through negative regulation of calcium efflux from mitochondria. Required for mitochondrial hyperfusion a pro-survival cellular response to stress which results in increased ATP production by mitochondria. May also regulate the organization of functional domains at the plasma membrane and play a role in T-cell activation through association with the T-cell receptor signaling complex and its regulation. [UniProt]
Calculated Mw	39 kDa
PTM	Hyperphosphorylated at Ser-17 in some patients with monoclonal gammopathy of undetermined significance (MGUS), multiple myeloma (MM) and Waldenstrom macroglobulinemia due to impaired dephosphorylation by PP2A. [UniProt]
Cellular Localization	Cell membrane; Peripheral membrane protein. Mitochondrion. Mitochondrion inner membrane; Lipid-anchor. Mitochondrion intermembrane space. Membrane raft. Cytoplasm, cytoskeleton. Note=Behaves as an integral membrane protein of the mitochondrion despite the absence of a detectable transmembrane domain (PubMed:21746876). Also associates with the actin cytoskeleton and membrane rafts in activated T-cells (PubMed:18641330, PubMed:10713127). [UniProt]

Images



ARG59999 anti-STOML2 / SLP-2 antibody WB image

Western blot: 25 µg of Mouse liver and A549 cell lysates stained with ARG59999 anti-STOML2 / SLP-2 antibody at 1:1000 dilution.