

ARG62337
anti-6X His tag antibody [HIS.H8]Package: 100 µg, 50 µg
Store at: -20°C

Summary

Product Description	Mouse Monoclonal antibody [HIS.H8] recognizes 6X His tag
Tested Reactivity	Other
Tested Application	Dot, ELISA, EMSA, ICC/IF, IP, WB
Specificity	Recognizes the epitope of 6x His-tags encoded by many commercially available vectors, regardless of the tag's location in the fusion protein sequences (i.e.: reacts with N-terminal, C-terminal or internal 6X His-tags)
Host	Mouse
Clonality	Monoclonal
Clone	HIS.H8
Isotype	IgG2b
Target Name	6X His tag
Species	Others
Immunogen	KLH-conjugated HHHHHH (6X His) synthetic peptide.
Conjugation	Un-conjugated

Application Instructions

Application table	Application	Dilution
	Dot	Assay-dependent
	ELISA	Assay-dependent
	EMSA	Assay-dependent
	ICC/IF	1:500 - 1:2000
	IP	1:200
	WB	1:1000 - 1:3000
Application Note	* The dilutions indicate recommended starting dilutions and the optimal dilutions or concentrations should be determined by the scientist.	

Properties

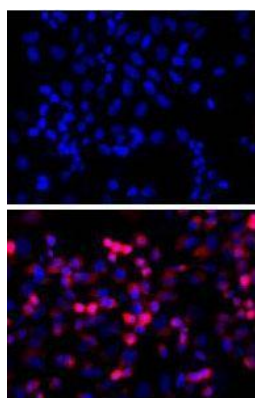
Form	Liquid
Purification	Protein A Purified
Purification Note	Protein A affinity chromatography from mouse ascites fluid.
Buffer	10mM PBS (pH 7.2) and 0.05% Sodium azide.

Preservative	0.05% Sodium azide
Concentration	1 mg/ml
Storage instruction	For continuous use, store undiluted antibody at 2-8°C for up to a week. For long-term storage, aliquot and store at -20°C or below. Storage in frost free freezers is not recommended. Avoid repeated freeze/thaw cycles. Suggest spin the vial prior to opening. The antibody solution should be gently mixed before use.
Note	For laboratory research only, not for drug, diagnostic or other use.

Bioinformation

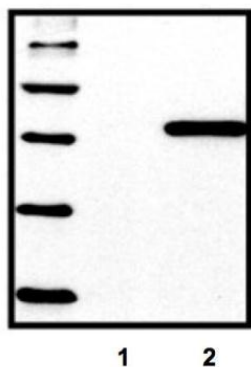
Background	<p>The H-H-H-H-H motif is used as a tag on many recombinant proteins to facilitate purification. The antibody recognizes the His-tag fused to the amino- or carboxy- termini of targeted proteins in transfected or transformed cells.</p> <p>His-tagged protein is also useful for the scientists for the binding assay and tracing the location of the protein-interested in the cells when the specific antibodies for the protein-of-interest are unavailable.</p>
Highlight	<p>Related Antibody Duos and Panels: ARG30002 Tag Internal Control Antibody Duo (His tag, GAPDH)</p> <p>Related products: 6x His tag antibodies; 6x His tag ELISA Kits; 6x His tag Duos / Panels; Anti-Mouse IgG secondary antibodies;</p>
Research Area	Controls and Markers antibody; Tag Internal Control antibody

Images



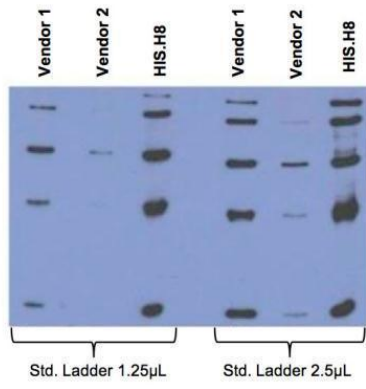
ARG62337 anti-6X His tag antibody [HIS.H8] ICC/IF image

TOP: Untransfected control; BOTTOM: ARG62337 anti-6X His tag antibody [HIS.H8] (red) on His-tagged fusion proteins in HEK293 cells. Both counterstained with DAPI (blue).



ARG62337 anti-6X His tag antibody [HIS.H8] WB image

Western blot: (1) untransfected control, (2) HEK293 cells transfected with His-tagged protein vector stained with ARG62337 anti-6X His tag antibody [HIS.H8].



ARG62337 anti-6X His tag antibody [HIS.H8] WB image

Western blot: A standard ladder containing five different His-tagged proteins stained with ARG62337 anti-6X His tag antibody [HIS.H8] at 1:2000 (0.5 µg/ml) to compare between.