

## ARG62463 anti-Cytokeratin 7 antibody [OV-TL 12/30]

Package: 100 µl, 50 µl  
Store at: -20°C

### Summary

Product Description	Mouse Monoclonal antibody [OV-TL 12/30] recognizes Cytokeratin 7
Tested Reactivity	Hu
Tested Application	FACS, ICC/IF, IHC-Fr, IHC-P, WB
Specificity	This antibody reacts with the 54 kD cytokeratin 7 intermediate filament protein
Host	Mouse
Clonality	Monoclonal
Clone	OV-TL 12/30
Isotype	IgG1, kappa
Target Name	Cytokeratin 7
Species	Human
Immunogen	OTN 11, ovarian carcinoma cell line
Conjugation	Un-conjugated
Alternate Names	SCL; Sarcolectin; CK-7; Cytokeratin-7; CK7; Keratin, type II cytoskeletal 7; Keratin-7; K7; K2C7; Type-II keratin Kb7

### Application Instructions

Application table	Application	Dilution
	FACS	1 µg/10 <sup>6</sup> cells
	ICC/IF	1:25 - 1:50
	IHC-Fr	1:25 - 1:50
	IHC-P	1:25 - 1:50
	WB	1:50 - 1:150
	Application Note	* The dilutions indicate recommended starting dilutions and the optimal dilutions or concentrations should be determined by the scientist.

### Properties

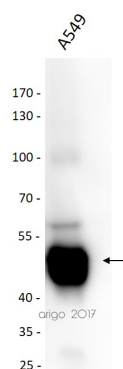
Form	Liquid
Buffer	20 mM tris-borate (pH 7.5), 150 mM sodium chloride, dialyzed media RPMI 1640/D-MEM, fetal bovine serum, BMC-6 carrier polysaccharides, carrier protein and 0.1% Sodium azide
Preservative	0.1% Sodium azide
Stabilizer	fetal bovine serum, BMC-6 carrier polysaccharides, carrier protein

Concentration	0.2 mg/ml
Storage instruction	For continuous use, store undiluted antibody at 2-8°C for up to a week. For long-term storage, aliquot and store at -20°C or below. Storage in frost free freezers is not recommended. Avoid repeated freeze/thaw cycles. Suggest spin the vial prior to opening. The antibody solution should be gently mixed before use.
Note	For laboratory research only, not for drug, diagnostic or other use.

## Bioinformation

Database links	<a href="#">GeneID: 3855 Human</a> <a href="#">Swiss-port # P08729 Human</a>
Gene Symbol	KRT7
Gene Full Name	keratin 7, type II
Background	Cytokeratin 7 is a member of the keratin gene family. The type II cytokeratins consist of basic or neutral proteins which are arranged in pairs of heterotypic keratin chains coexpressed during differentiation of simple and stratified epithelial tissues. This type II cytokeratin is specifically expressed in the simple epithelia lining the cavities of the internal organs and in the gland ducts and blood vessels. The genes encoding the type II cytokeratins are clustered in a region of chromosome 12q12-q13. Alternative splicing may result in several transcript variants; however, not all variants have been fully described. [provided by RefSeq, Jul 2008]
Function	Cytokeratin 7 blocks interferon-dependent interphase and stimulates DNA synthesis in cells. Involved in the translational regulation of the human papillomavirus type 16 E7 mRNA (HPV16 E7). [UniProt]
Research Area	CK7/CK20 Carcinoma Study antibody
Calculated Mw	51 kDa
PTM	Arg-20 is dimethylated, probably to asymmetric dimethylarginine.
Cellular Localization	Cytoplasm

## Images



ARG62463 anti-Cytokeratin 7 antibody [OV-TL 12/30] WB image

Western blot: 30 µg of A549 cell lysate stained with ARG62463 anti-Cytokeratin 7 antibody [OV-TL 12/30] at 1:50 dilution.