

## ARG62669 anti-alpha Fetoprotein antibody [AFP-01]

Package: 100 µg  
Store at: -20°C

### Summary

Product Description	Mouse Monoclonal antibody [AFP-01] recognizes alpha-Fetoprotein
Tested Reactivity	Hu
Tested Application	ELISA, ICC/IF, IP, WB
Specificity	The clone AFP-01 reacts with human alpha-Fetoprotein (AFP), a 70 kDa oncofetal antigen. AFP is a major fetal plasma protein, but is not present in healthy adult tissues. Elevated AFP concentrations in adult plasma may be an early marker of hepatocellular carcinoma or teratoblastoma, while high concentrations in amniotic fluid may indicate severe congenital defects of a fetus.
Host	Mouse
Clonality	Monoclonal
Clone	AFP-01
Isotype	IgG1
Target Name	alpha Fetoprotein
Immunogen	purified alpha-Fetoprotein
Conjugation	Un-conjugated
Alternate Names	Alpha-fetoprotein; HPAFP; FETA; Alpha-fetoglobulin; AFPD; Alpha-1-fetoprotein

### Application Instructions

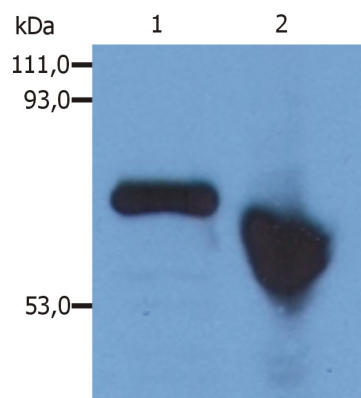
Application table	Application	Dilution
	ELISA	Assay-dependent
	ICC/IF	Assay-dependent
	IP	Assay-dependent
	WB	Assay-dependent
Application Note	<p>IP: Interaction of the antibody AFP-01 with AFP is dependent on the presence of calcium ions (strongly inhibited by chelating agents). Such characteristics of the antibody can be exploited for immunoaffinity purification of APF under mild elution conditions.</p> <p>ELISA: The antibody AFP-01 has been tested as the detection antibody in a sandwich ELISA for analysis of human alpha-Fetoprotein in combination with antibody AFP-11.</p> <p>WB: Sample preparation: Resuspend approx. 50 mil. cells in 1 ml cold Lysis buffer (1% laurylmaltoside in 20 mM Tris/Cl, 100 mM NaCl pH 8.2, 50 mM NaF including Protease inhibitor Cocktail). Incubate 60 min on ice. Centrifuge to remove cell debris. Mix lysate with non-reducing/reducing Laemmli SDS-PAGE sample buffer.</p> <p>* The dilutions indicate recommended starting dilutions and the optimal dilutions or concentrations should be determined by the scientist.</p>	
Positive Control	WB: HepG2	

### Properties

Form	Liquid
Purification	Purified from ascites by precipitation methods.
Purity	> 95% (by SDS-PAGE)
Buffer	PBS (pH 7.4) and 15 mM Sodium azide
Preservative	15 mM Sodium azide
Concentration	1 mg/ml
Storage instruction	For continuous use, store undiluted antibody at 2-8°C for up to a week. For long-term storage, aliquot and store at -20°C or below. Storage in frost free freezers is not recommended. Avoid repeated freeze/thaw cycles. Suggest spin the vial prior to opening. The antibody solution should be gently mixed before use.
Note	For laboratory research only, not for drug, diagnostic or other use.

## Bioinformation

Database links	<a href="#">GeneID: 174 Human</a> <a href="#">Swiss-port # P02771 Human</a>
Gene Symbol	AFP
Gene Full Name	alpha-fetoprotein
Background	<p>This gene encodes alpha-fetoprotein, a major plasma protein produced by the yolk sac and the liver during fetal life. Alpha-fetoprotein expression in adults is often associated with hepatoma or teratoma. However, hereditary persistence of alpha-fetoprotein may also be found in individuals with no obvious pathology. The protein is thought to be the fetal counterpart of serum albumin, and the alpha-fetoprotein and albumin genes are present in tandem in the same transcriptional orientation on chromosome 4. Alpha-fetoprotein is found in monomeric as well as dimeric and trimeric forms, and binds copper, nickel, fatty acids and bilirubin. The level of alpha-fetoprotein in amniotic fluid is used to measure renal loss of protein to screen for spina bifida and anencephaly. [provided by RefSeq, Jul 2008]</p>
Function	Binds copper, nickel, and fatty acids as well as, and bilirubin less well than, serum albumin. Only a small percentage (less than 2%) of the human AFP shows estrogen-binding properties. [UniProt]
Highlight	<p>Related products:  <a href="#">alpha Fetoprotein antibodies</a>; <a href="#">alpha Fetoprotein ELISA Kits</a>; <a href="#">alpha Fetoprotein Duos / Panels</a>; <a href="#">Anti-Mouse IgG secondary antibodies</a>;</p> <p>Related news:  <a href="#">Stem cell and the regenerative medicine: Ready for the patients</a></p>
Research Area	Cancer antibody; Cell Biology and Cellular Response antibody; Developmental Biology antibody
Calculated Mw	69 kDa
PTM	<p>Independent studies suggest heterogeneity of the N-terminal sequence of the mature protein and of the cleavage site of the signal sequence.</p> <p>Sulfated.</p>



ARG62669 anti-alpha Fetoprotein antibody [AFP-01] WB image

Western blot: Hep G2 cell lysate stained with ARG62669 anti-alpha Fetoprotein antibody [AFP-01].

Lane 1: immunostaining with anti-human alpha-Fetoprotein under reducing conditions. Lane 2: immunostaining with anti-human alpha-Fetoprotein under non-reducing conditions.