

ARG62730 anti-CD147 antibody [MEM-M6/1] (Biotin)

Package: 100 µg
Store at: 4°C

Summary

| | |
|---------------------|---|
| Product Description | Biotin-conjugated Mouse Monoclonal antibody [MEM-M6/1] recognizes CD147 |
| Tested Reactivity | Hu |
| Tested Application | FACS |
| Specificity | The clone MEM-M6/1 recognizes an epitope in the N-terminal Ig domain (D1) of CD147 (Neurothelin), a 50-60 kDa type I transmembrane glycoprotein primarily expressed on all leukocytes, red blood cells, platelets and endothelial cells; it is not expressed by resting lymphocytes. MEM-M6/1 is a high-affinity antibody capable of binding to unstimulated peripheral blood T cells. |
| Host | Mouse |
| Clonality | Monoclonal |
| Clone | MEM-M6/1 |
| Isotype | IgG1 |
| Target Name | CD147 |
| Species | Human |
| Immunogen | Protein A-CR purified soluble recombinant form of CD147, CD147Rg, which consists of the cDNA coding for the hinge region, CH2-and CH3 domain of human IgG1 (CD147Rg is secreted by transfectants as a dimer). |
| Conjugation | Biotin |
| Alternate Names | OK; Tumor cell-derived collagenase stimulatory factor; Leukocyte activation antigen M6; TCSF; Extracellular matrix metalloproteinase inducer; OK blood group antigen; CD147; Basigin; M6; EMMPRIN; Collagenase stimulatory factor; CD antigen CD147; 5F7 |

Application Instructions

| Application table | <table><thead><tr><th>Application</th><th>Dilution</th></tr></thead><tbody><tr><td>FACS</td><td>8 µg/ml</td></tr></tbody></table> | Application | Dilution | FACS | 8 µg/ml |
|-------------------|--|-------------|----------|------|---------|
| Application | Dilution | | | | |
| FACS | 8 µg/ml | | | | |
| Application Note | * The dilutions indicate recommended starting dilutions and the optimal dilutions or concentrations should be determined by the scientist. | | | | |

Properties

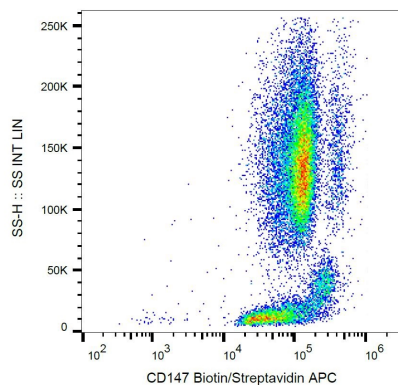
| | |
|-------------------|--|
| Form | Liquid |
| Purification Note | The purified antibody is conjugated with Biotin-LC-NHS under optimum conditions. The reagent is free of unconjugated biotin. |
| Buffer | PBS (pH 7.4) and 15 mM Sodium azide |
| Preservative | 15 mM Sodium azide |
| Concentration | 1 mg/ml |

| | |
|---------------------|--|
| Storage instruction | Aliquot and store in the dark at 2-8°C. Keep protected from prolonged exposure to light. Avoid repeated freeze/thaw cycles. Suggest spin the vial prior to opening. The antibody solution should be gently mixed before use. |
| Note | For laboratory research only, not for drug, diagnostic or other use. |

Bioinformation

| | |
|----------------|--|
| Database links | GeneID: 682 Human Swiss-port # P35613 Human |
| Gene Symbol | BSG |
| Gene Full Name | basigin (Ok blood group) |
| Background | CD147 (basigin, neurothelin, OX-47, 5A11, CE9, M6) also known as EMMPRIN (extracellular matrix metalloproteinase inducer) or TCSF (tumour cell-derived collagenase-stimulatory factor) is an ubiquitously expressed cell surface protein with multiple glycosylated forms. The highest level of CD147 expression is on metabolically active cells, such as lymphoblasts, inflammatory cells, brown adipocytes and malignant tumour cells. CD147 has multiple functions, including facilitating of cell surface expression of monocarboxylate transporter proteins and extracellular matrix metalloproteinases, regulation of integrin functions, it plays roles in cell development and activation, fetal development or retinal function. |
| Function | Plays an important role in targeting the monocarboxylate transporters SLC16A1, SLC16A3 and SLC16A8 to the plasma membrane. Plays pivotal roles in spermatogenesis, embryo implantation, neural network formation and tumor progression. Stimulates adjacent fibroblasts to produce matrix metalloproteinases (MMPs). Seems to be a receptor for oligomannosidic glycans. In vitro, promotes outgrowth of astrocytic processes. [UniProt] |
| Research Area | Cancer antibody; Immune System antibody; Metabolism antibody; Neuroscience antibody |
| Calculated Mw | 42 kDa |
| PTM | N-glycosylated. |

Images



ARG62730 anti-CD147 antibody [MEM-M6/1] (Biotin) FACS image

Flow Cytometry: Human peripheral blood stained with ARG62730 anti-CD147 antibody [MEM-M6/1] (Biotin).